

YTX5L-BS

12V 4AH

Ultracell®

'Quality in Every Language'

YTX5L-BS

Awaiting Image

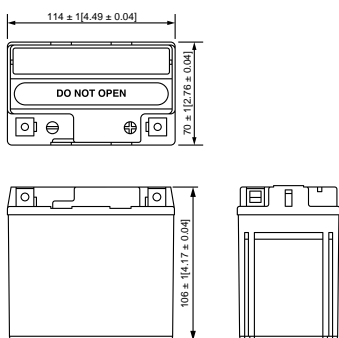
Physical Specification

Part Number	YTX5L-BS
Length	114 ± 2 mm
Width	70 ± 2 mm
Container Height	106 ± 2 mm
Total Height (with terminal)	106 ± 2 mm
Approx Weight	1.50 kg

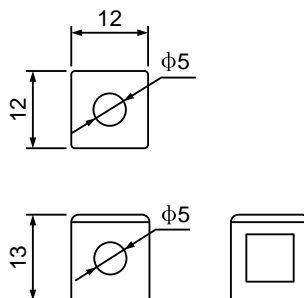
Specifications

	Nominal Voltage	12V
	Rated Capacity (10HR)	4Ah
	Approx ACID Per Battery	0.26 L
	Charge Current (A)	0.4A
Capacity 25°C	10 hours rate (0.4A to 10.5V)	4.0Ah
	5 hours rate (0.8A to 10.2V)	3.4Ah
	1C (4.0A to 9.6V)	1.8Ah
	3C (12.0A to 9.6V)	1.4Ah
	Cold Cranking Amperes (-18°C SAE Standard)	55A
	Cold Cranking Amperes (-18°C EN Standard)	83A
	Internal Resistance (at 1KHz)	9.0mΩ
Operating Temperature Range	Charge	0°C to 40°C
	Discharge	-15°C to -50°C
	Storage	-15°C to 40°C
Life Expectancy (Cycle Use)	100% depth of discharge	200 cycles
	80% depth of discharge	225 cycles
	50% depth of discharge	500 cycles
Charge Retention at 20°C (shelf life)	1 Month	92%
	3 Month	90%
	6 Month	80%
Standby Use	3-5 years	
Case Material	PP	

Dimensions



Terminal



Discharge Time Vs Discharge Current

