

IEC Plug E, Cord Connector (Rewireable), Angled



Description

- Cord Connectors (rewireable), Screw-on mounting
- 1 Function
- Appliance Inlet, Pin temperature 70 °C, Protection class I
- Cable entry possible in four directions

Approvals

- UL File Number: E96454
- CSA File Number: 70111

Weblinks

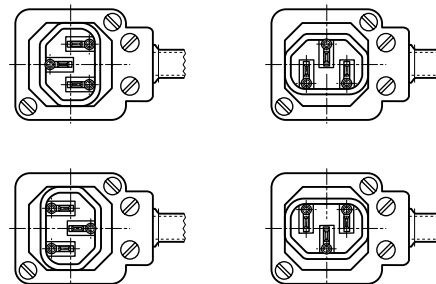
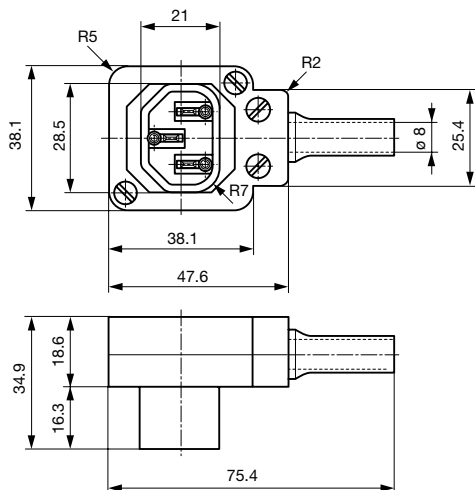
[pdf-datasheet](#), [html-datasheet](#), [General Product Information](#), [Approvals](#), [CE declaration of conformity](#), [RoHS](#), [CHINA-RoHS](#), [REACH](#), [Mating Connectors](#), [e-Shop](#), [SCHURTER-Stock-Check](#), [Distributor-Stock-Check](#), [CAD-Drawings](#), [Accessories](#), [Detailed request for product](#)

Technical Data

| | |
|---------------------------|---|
| Ratings IEC | 10A / 250VAC; 50Hz |
| Ratings UL/CSA | 10A / 250VAC; 60Hz |
| Dielectric Strength | > 2 kVAC between L-N > 2 kVAC between L/N-PE (1 min/50Hz) |
| Allowable Operation Temp. | -25 °C to 70 °C |
| Protection Class | Suitable for appliances with protection class I acc. to IEC 61140 |
| Terminal | Cable |
| Material: Housing | Thermoplastic, black, UL 94V-0 |

| | |
|------|---|
| Plug | E following IEC/EN 60320-2-2, UL 498, CSA C22.2 no. 42 (for cold conditions) pin-temperature 70 °C, 10A, Protection Class I |
|------|---|

Dimensions



Cable entry possible in four directions

All Variants

| Color | Max. cable diameter | Max. wire size | Order Number |
|-------|---------------------|------------------------------------|--------------|
| black | 8.5 mm | 3 x 1 mm ² / 3 x 18 AWG | 4300.0401 |

Most Popular.

Availability for all products can be searched real-time: <http://www.schurter.com/en/Stock-Check/Stock-Check-SCHURTER>

Packaging unit 20 Pcs

Mating Outlets/Connectors

Category / Description

Appliance Outlet Overview complete



| | |
|---|--------|
| IEC Appliance Outlet F, Screw-on Mounting, Front Side, Solder or Quick-connect Terminal | 6600-3 |
| IEC Appliance Outlet F, Snap-in Mounting, Front Side, Solder or Quick-connect Terminal | 6600-4 |
| IEC Appliance Outlet F, Screw-on Mounting, Front Side, Solder Terminal | 4787 |
| IEC Appliance Outlet F, Snap-in Mounting, Front Side, Solder or Quick-connect Terminal | 4788 |

Appliance Outlet further types to P685



Appliance Outlet shuttered Overview complete

| | |
|---|------|
| IEC Appliance Outlet F Shuttered, Screw-on Mounting, Front Side, Solder or Quick-connect Terminal | 4721 |
| IEC Appliance Outlet F Shuttered, Snap-in Mounting, Front Side, Solder or Quick-connect Terminal | 4723 |

Appliance Outlet shuttered further types to P685

Connector Overview complete



| | |
|---|---------|
| IEC Connector C13, Rewireable, Straight | 4782 |
| IEC Connector C13, Rewireable, Straight | 4022 |
| IEC Connector C13, Rewireable, Angled | 4785 |
| IEC Connector C13, Rewireable, Angled | 4300-06 |
| IEC Connector C13, Rewireable, Angled | 4012 |

Connector further types to P685

...

Distribution Unit Overview complete



| | |
|--|------|
| Distribution Unit for Snap-in Mounting with 1 IEC Appliance Inlet C14 and 1 Appliance Outlet F | 0712 |
| Distribution Unit with 1 IEC Appliance Inlet C14 and 2 Appliance Outlets F, Shuttered | 4741 |
| Strip Block for Snap-in Mounting with up to 7 IEC Appliance Outlets F | 0909 |
| Strip Block for Snap-in Mounting with 4 IEC Appliance Outlets F | 4752 |
| Strip Block for Snap-in Mounting with 4 IEC Appliance Outlets F and space for extra component | 4754 |

Distribution Unit further types to P685

...

Power Entry Module Overview complete



| | |
|--|-------------|
| IEC Appliance Inlet C14 with Appliance Outlet F | KP (Outlet) |
| IEC Appliance Inlet C14 with modular extended Components | Felcom 64 |
| IEC Appliance Outlet F Shuttered with Fuseholder 1-pole | 4719 |

Power Entry Module further types to P685

Power Entry Module with line filter Overview complete



| | |
|--|-----------|
| IEC Appliance Inlet C14 Modular Assembling Options | Felcom 54 |
|--|-----------|

Power Entry Module with line filter further types to P685