

## Datacom Connectors

**Jack connectors  
3.5 mm stereo**

**Series 15**



**KLS 4... - WKLS 40**

Jack plugs, with solder connection  
3.5 mm, stereo

straight, with bend protection  
**KLS 40** JC35P3  
**KLS 44** JC35P3, metal housing  
angular, without bend protection  
**WKLS 40** JC35P3

**KLK 4... - KLB 4**

Jack sockets, with solder connection  
3.5 mm, stereo

straight, with bend protection  
**KLK 4** JC35J3A  
**KLK 44**, JC35J3A, metal housing  
chassis socket, straight  
**KLB 4** JC35J3A

**1502 - 1503 - KLBR 4**

Jack chassis sockets, for printed  
circuit boards  
3.5 mm, stereo

upright  
**1502 01** JC35J3A  
angular  
**1503 07**, **1503 08** JC35J3A  
**KLBR 4** JC35J3Z, w. break contact  
**1503 09** JC35J3B, 2 break contacts  
**1503 02**, **1503 03** JC35J3A, SMT

**1532 - 1502**

Jack connectors, with threaded  
joint M11  
3.5 mm, stereo

plug with bend protection and  
solder connection  
**1532 05** JC35P3  
chassis socket with solder connection  
**1502 04** JC35J3A

**1532**

Jack plug, with solder connection  
3.5 mm, stereo  
according to **JEITA RC-5325A**

**1532 02** JC35P4 straight

**1502**

Jack chassis socket, with solder  
connection  
3.5 mm, stereo  
according to **JEITA RC-5325A**

**1502 02** JC35J4A straight

**1503**

Jack chassis sockets, for printed  
circuit boards, angular  
3.5 mm, stereo  
according to **JEITA RC-5325A**

**1503 10** JC35J4A  
**1503 10 V209** JC35J4A  
**1503 13**, **1503 15** JC35J4A, SMT  
**1503 16** JC35J4A, potted IPx7

According to JIS C 6560/JEITA RC-5325A. Size 3.5 mm, stereo, large variety. For audio and video signal currents as well as low load currents up to 1 A.

Number of poles	3	3	4
Contact plating	tin/nickel/silver/gold	nickel/gold	nickel/silver ( <b>1503 10 V209</b> gold)
Rated current	1 A	1 A	1 A
Rated voltage	34 V AC/DC	34 V AC/DC	34 V AC/DC

**Jack connectors  
2.5/3.5/6.35 mm**

**Series 15**



**KLS 1 - KLS 10 - KLB... 1**

Jack connectors  
2.5 mm, mono

plugs with bend protection and  
solder connection  
**KLS 1** straight, ball-headed  
**KLS 10** JC25P2, straight, cone-h.  
chassis sockets with break contact  
**KLB 1** JC25J2B, straight, with  
solder connection  
**KLBR 1** JC25J2B, angular, for  
printed circuit boards

**KLS 13 - KLB 13**

Jack connectors, with solder con-  
nection  
2.5 mm, stereo

plug with bend protection  
**KLS 13** JC25P3, straight  
chassis socket  
**KLB 13** JC25J3A, straight

**1501**

Jack chassis sockets, for printed  
circuit boards, angular  
2.5 mm, stereo

with plastic collar  
**1501 03**, **1501 05** JC25J3A  
**1501 07** JC25J3B, SMT, 2 break  
contacts  
with metal collar  
**1501 04**, **1501 06** JC25J3A  
**1501 02** JC25J3B, SMT, 2 break  
contacts

**KLS 2... - 1532 - WKLS 2**

Jack plugs, with solder connection  
and bend protection  
3.5 mm, mono

**KLS 2**, ball-headed, straight  
cone-headed  
**1532 06** JC35P2, straight  
**KLS 22**, **1532 04** JC35P2, straight,  
with metal housing  
**WKLS 2** JC35P2, cone-headed,  
angular (without bend protection)

**KLK 2... - 1502 - 1503**

Jack sockets  
3.5 mm, mono

with bend protection and solder  
connection, straight  
**KLK 2** JC35J2A  
**KLK 22**, JC35J2A, metal housing  
chassis sockets for printed circuit  
boards (manual soldering)  
**1502 03** JC35J2B, straight  
**1503 12** JC35J2B, angular  
chassis sockets for printed circuit  
boards  
**1503 06** JC35J2B, angular

**KLSM 3 - KLKM 3 - KLBM 3**

Jack connectors, with solder con-  
nection  
6.35 mm, mono

plug, with bend protection  
**KLSM 3** JC63P2, straight  
socket, with bend protection  
**KLKM 3** JC63J2A, straight  
chassis socket  
**KLBM 3** JC63J2A, straight

**KLS 3... - KLK 3 - KLB... 3**

Jack connectors, with solder con-  
nection  
6.35 mm, stereo

plug, with bend protection  
**KLS 3** JC63P3, straight  
socket, with bend protection  
**KLK 3** JC63J3A, straight  
chassis sockets  
**KLB 3**, **KLBP 3** JC63J3A  
**KLBPS 3** JC63J3Z, break contact  
**KLBPSS 3** JC63J3E, 2 change-  
over switches

According to JIS C 6560. Size 2.5/3.5/6.35 mm, large variety. For audio and video signal currents as well as low load currents up to 0.5/1/2 A.

Number of poles	2	3	2	2	3
Contact plating	nickel/silver	tin/nickel/silver/gold	tin/nickel/silver	nickel	nickel
Rated current	0.5 A	0.5 A ( <b>1501 06</b> 1 A)	1 A	2 A	2 A
Rated voltage	34 V AC/DC	34 V AC/DC ( <b>1501 06</b> 12 V DC)	34 V AC/DC	34 V AC/DC	34 V AC/DC

**RCA connectors**

**Series 15**



STO - XSTO	KTO - XKTO	BTO - BTOR
RCA plugs, straight, with solder connection	RCA sockets, straight, with solder connection	RCA chassis sockets
without bend protection <b>STO 1</b>	without bend protection <b>KTO 1</b>	with solder connection <b>BTO 1</b> <b>BTO 1 V gold</b>
with bend protection <b>XSTO 1</b> <b>STO 2</b> metal housing <b>STO 11 V</b> metal housing	with bend protection <b>XKTO 1</b>	for printed circuit boards <b>BTOR 1</b>

According to JEITA RC-5231.  
For audio and video signal currents as well as low load currents up to 2 A.

<i>Number of poles</i>	2	
<i>Contact plating</i>	nickel ( <b>STO 11 V</b> gold)	tin/nickel ( <b>BTO 1 V</b> gold)
<i>Rated current</i>	2 A	
<i>Rated voltage</i>	34 V AC/DC	

**USB and IEEE 1394 connectors**

**Series 24**



2410	2410 - 2412	2411	2486	2431 - 2480 - 2482	2420	2416 - 2415 - 2417
USB 2.0 chassis plug type A, for printed circuit boards	USB 2.0 chassis sockets type A, for printed circuit boards	USB 2.0 chassis sockets type B, for printed circuit boards	Mini USB 2.0 chassis sockets, for printed circuit boards	USB 2.0 connecting cables	USB 3.0 chassis sockets type A, for printed circuit boards	IEEE 1394 chassis sockets, for printed circuit boards
<b>2410 08</b> angular <b>2410 07</b> angular, SMT	<b>2410 01</b> upright <b>2410 02</b> angular <b>2410 06</b> angular, SMT double, angular <b>2410 05</b> <b>2410 03</b> with ground contacts <b>2410 09</b> with ground contacts <b>2412 01</b> protective cap	<b>2411 01</b> upright <b>2411 02</b> angular <b>2411 03</b> angular	angular, SMT <b>2486 01</b> type B <b>2486 03</b> type B	type-A plug to type-B plug <b>2431 01</b> length 1 m <b>2431 02</b> length 2 m <b>2431 03</b> length 3 m <b>2431 05</b> length 5 m type-A plug to mini type-B plug <b>2480 01</b> length 1 m <b>2480 02</b> length 2 m <b>2480 03</b> length 3 m type-A plug to micro type-B plug <b>2482 01</b> length 1.50 m	<b>2420 01</b> angular <b>2420 02</b> angular, SMT	<b>2416 01</b> angular <b>2415 01</b> upright <b>2417 01</b> angular <b>2417 02</b> angular, SMT
<i>Number of poles</i>	4	5	5	4/5	9	6 ( <b>2416 4</b> )
<i>Contact plating</i>	gold	gold	gold	gold	gold	sel. gold
<i>Rated current</i>	1 A	0.5 A	0.5 A	<b>2431, 2482</b> 1 A, <b>2480</b> 0.5 A	1.5 A	1 A ( <b>2416</b> 0.5 A)
<i>Rated voltage</i>	30 V AC	5 V AC	5 V AC	<b>2431, 2482</b> 30 V AC, <b>2480</b> 5 V AC	100 V AC	30 V AC ( <b>2416</b> 5 V AC)

Data transmission rates up to 5 Gbit/s according to USB 3.0 specification.  
For signal and low load currents up to 1.5 A.

<i>Number of poles</i>	4/6/8/10		8		8	
<i>Contact plating</i>	gold		gold		gold	
<i>Rated current</i>	2 A		2 A		1.5 A	
<i>Rated voltage</i>	≤ 250 V		≤ 250 V		150 V	

**Modular connectors**

**Serie 25**

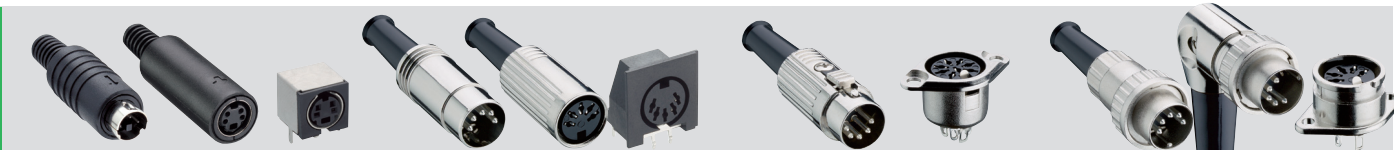


P 12... - P 30... - 2532	P 13... - 2533	2541
Modular plugs, with piercing contacts	Modular chassis sockets, with flange	Double modular chassis socket, fully shielded, straight, with flange and locking latch
<b>P 126</b> RJ-10, 4p4c <b>P 127</b> RJ-11, 6p4c <b>P 128</b> RJ-12, 6p6c <b>P 129 S</b> RJ-45, 8p8c <b>P 129 S</b> RJ-45, 8p8c, shielded <b>P 303 S</b> 10p10c, shielded <b>2532</b> bend protection grommet	angular <b>P 133</b> RJ-45, 8p8c, shielded <b>P 137 S</b> RJ-45, 8p8c, fully shielded upright <b>P 136</b> RJ-45, 8p8c, fully shielded <b>2533</b> protective cap	<b>2541 01</b> RJ-45, 8p8c
<i>Number of poles</i>	8	
<i>Contact plating</i>	gold	
<i>Rated current</i>	2 A	
<i>Rated voltage</i>	≤ 250 V	

Compatible system. Connectors along with convenient tooling.  
For signal and low load currents up to 2 A.

**Miniature and DIN circular connectors**

**Series 01**



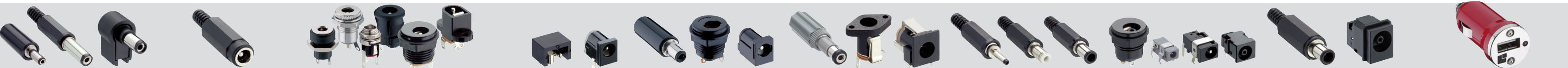
MP-371 - MJ-372 - TM 0508 A	0131 - 0121 - WB	0137 - 0103	0132 - 0134 - 0122 - 0107
Miniatur circular connectors (with bend protection and solder connection) and miniature chassis socket (for printed circuit boards)	Circular DIN connectors, shielded (with bend protection and solder connection) and circular DIN chassis sockets (for printed circuit boards)	Circular DIN connector, shielded, with locking latch (with bend protection and solder connection) and circular DIN chassis socket (with solder connection)	Circular DIN connectors, shielded, with locking latch (with bend protection and solder connection) and circular DIN chassis socket (with solder connection)
<b>MP-371</b> plug <b>MJ-372</b> socket <b>TM 0508 A</b> chassis socket	<b>0131</b> plug <b>0121</b> socket <b>WB</b> chassis socket	<b>0137</b> plug <b>0103</b> chassis socket	<b>0132</b> plug, straight <b>0134</b> plug, angular <b>0122</b> socket <b>0107</b> chassis socket

Circular DIN connectors according to IEC 60130-9 resp. IEC 61076-2-106. Easy mounting, large variety, compatible systems. For signal and low load currents up to 4 A.

<i>Number of poles</i>	4, 6, 8 ( <b>TM 0508 A</b> 4-8)	3-8 ( <b>WB</b> 5, 6, 8)	3-8 ( <b>0107</b> 3, 4, 5, 7, 8)	3-8 ( <b>0107</b> 3, 4, 5, 7, 8)
<i>Contact plating</i>	silver ( <b>TM0508A</b> fl. gold)		silver ( <b>WB</b> tin)	
<i>Rated current</i>	1 A AC		4 A	
<i>Rated voltage</i>	100 V AC		60 V AC ( <b>WB</b> 24 V AC/34 V DC)	

**Power supply connectors**

**Series 16**



NES/J - XNES/J - 1633	NEK/J	1614 - 1610 - NEB/J	1613 - NEB/J - NEB	1634 - 3610 - 1613	NES - NEB	1636	1613 - 1614	1636 - 1613	1673	
Power supply plugs, with solder connection	Power supply sockets, with solder connection	Power supply chassis sockets, straight, with solder connection	Power supply chassis sockets, angular, with break contact, for printed circuit boards	Power supply connectors with bayonet locking	Power supply connectors according to <b>DIN 45323</b>	Power supply plugs according to <b>JEITA RC-5320A</b> , straight, with bend protection and solder connection	Power supply chassis sockets according to <b>JEITA RC-5320A</b> , with break contact	Power supply connectors according to <b>JEITA RC-5322</b>	Charger adapter for cigarette lighter, SAE J563 to USB type-A socket, with control LED	
straight, without bend protection <b>NES/J 135</b> 3.4/1.4 mm 0.5 A <b>NES/J 21</b> 5.5/2.1 mm 0.5 A <b>NES/J 210</b> 5.5/2.1 mm 0.5 A <b>NES/J 25</b> 5.5/2.5 mm 1 A <b>NES/J 250</b> 5.5/2.5 mm 1 A straight, with bend protection <b>XNES/J 210</b> 5.5/2.1 mm 0.5 A <b>1633 02</b> 5.5/2.1 mm 4 A <b>XNES/J 250</b> 5.5/2.5 mm 1 A <b>1634 02</b> 5.5/2.5 mm 4 A angular, without bend protection <b>NES/J 21 W</b> 5.5/2.1 mm 0.5 A	straight, with bend protection <b>NEK/J 210</b> 5.7/2.0 mm 0.5 A <b>NEK/J 250</b> 5.7/2.35 mm 1 A	<b>1614 17</b> 3.6/1.3 mm 0.5 A <b>1614 16</b> 5.6/2.0 mm 0.5 A <b>1614 09, 1614 14</b> 5.7/2.0 mm 0.5 A <b>1614 10, 1614 15</b> 5.7/2.35 mm 1 A <b>1610 02</b> 5.8/1.95 mm 0.5 A <b>1610 01</b> 5.8/2.35 mm 1 A <b>NEB/J 21 C</b> 6.3/2.0 mm 0.5 A <b>NEB/J 25 C</b> 6.3/2.35 mm 1 A <b>1613 18</b> 6.3/2.0 mm 1 A 24V SMT <b>NEB/J 21</b> 6.5/1.9 mm 0.5 A <b>1613 14</b> 6.5/2.0 mm 3.5 A 24V <b>1613 15</b> 6.5/2.45 mm 3.5 A 24V	<b>1613 12</b> 4.2/1.3 mm 0.5 A 6V <b>1613 20</b> 4.5/1.3 mm 0.5 A 6V <b>NEB/J 21 R</b> 6.0/1.9 mm 0.5 A 12V <b>NEB 21 R</b> 6.0/1.95 mm 3 A 12V <b>NEB/J 25 R</b> 6.0/2.35 mm 1 A 12V <b>1613 21</b> 6.0/2.35 mm 3 A 12V <b>1613 18</b> 6.3/2.0 mm 1 A 24V SMT <b>1613 14</b> 6.5/2.0 mm 3.5 A 24V <b>1613 15</b> 6.5/2.45 mm 3.5 A 24V	plug, with solder connection <b>1634 01</b> 5.5/2.5 mm chassis socket, with break contact and solder connection <b>1610 04</b> 6.3/2.35 mm chassis socket, with break contact, for printed circuit boards <b>1613 23</b> 5.7/2.35 mm	plug, with solder connection <b>NES 1</b> 6.0/1.98 mm chassis socket, solder connection <b>NEB 1</b> straight, 6.6/1.9 mm chassis socket with break contact, for printed circuit boards <b>NEB 1 R</b> angular, 6.6/1.9 mm	<b>1636 01</b> JSAP1, 2.35/0.7 mm 3.15V <b>1636 02</b> JSAP2, 4.0/1.7 mm 6.3V <b>1636 03</b> JSAP3, 4.75/1.7 mm 10.5V <b>1636 04</b> JSBP4, 5.5/3.3/1.0 mm 13.5V <b>1636 05</b> JSBP5, 6.5/4.3/1.4 mm 18V	with solder connection <b>1614 05</b> JSBJ5, 5.9/3.0/1.45 mm 18V for printed circuit boards <b>1613 03</b> JSAJ11, 2.75/0.65 mm 3.15V <b>1613 05</b> JSAJ21, 4.4/1.6 mm 6.3V <b>1613 04</b> JSAJ21, 4.4/1.65 mm 6.3V <b>1613 07</b> JSAJ31, 5.15/1.65 mm 10.5V <b>1613 09</b> JSBJ4, 5.15/3.0/1.05 mm 13.5V <b>1613 10</b> JSBJ41, 5.15/3.0/1.05 mm 13.5V <b>1613 11</b> JSBJ51, 7.0/4.0/1.45 mm 18V	plug, with solder connection <b>1636 06</b> JCBP1, 6.5/4.1/1.0 mm chassis socket with break contact, for printed circuit boards <b>1613 19</b> JCBJ11, 7.0/3.0/1.05 mm	<b>1673 01</b>	
<i>Number of poles</i>	2		2		2		2		2	
<i>Contact plating</i>	tin/nickel/silver		tin/nickel/silver		nickel/tin		nickel/tin		nickel/silver	
<i>Rated current</i>	0.5/1/4 A		0.5/1 A		0.5/1/3/3.5 A		1 A		3 A	
<i>Rated voltage</i>	12 V DC		12 V DC		6/12/24 V DC		12 V DC		34 V DC	

Mostly according to DIN 45323, JEITA RC-5320A or JEITA RC-5322. Given measures: Diameters from outermost inward.  
For low load currents up to 4 A.

<i>Number of poles</i>	2		2		2		2		2	
<i>Contact plating</i>	tin/nickel/silver		tin/nickel/silver		nickel/tin		nickel/tin		nickel/silver	
<i>Rated current</i>	0.5/1/4 A		0.5/1 A		0.5/1/3/3.5 A		1 A		3 A	
<i>Rated voltage</i>	12 V DC		12 V DC		6/12/24 V DC		12 V DC		34 V DC	

[www.lumberg.com](http://www.lumberg.com) · [info@lumberg.com](mailto:info@lumberg.com)

