

PB 1021 Test Jack, PCB Mounting, Ø 2 mm, 6.3 A



Description

- PCB Mounting
- Test Jack, diameter 2.0 mm
- measuring and testing during operation
- horizontal and vertical connections
- Continuous electrical connection
- Resilient contacts, gold plated

Weblinks

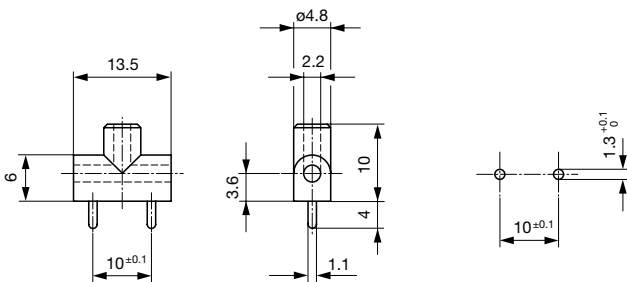
[pdf-datasheet](#), [html-datasheet](#), [General Product Information](#), [Approvals](#), [CE declaration of conformity](#), [RoHS](#), [CHINA-RoHS](#), [e-Shop](#), [SCHURTER-Stock-Check](#), [Distributor-Stock-Check](#), [CAD-Drawings](#), [Accessories](#), [Mounting instruction](#), [Detailed request for product](#)

Technical Data

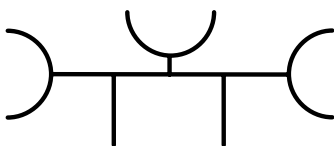
Diameter	2 mm
Rated current	6.3 A
Admissible switching power	220 W / max. 5 A or 75 VDC 440 W / max. 5 A or 50 VAC
Contact resistance	< 7 mΩ at 20 mV
Allowable Operation Temp.	-25 °C to 70 °C

Solderability	235 °C / 2 sec acc. to IEC 60068-2-20 , Test Ta, method 1
Resistance to Soldering Heat	260 °C / 5 sec acc. to IEC 60068-2-20 , Test Tb, method 1A
Weight	0.5 g
Material: Housing	Thermoplastic (PC), UL 94V-2
Surface of contacts	gold plated , Thickness 0.5 μm

Dimensions



Diagrams



Variants

Product group	Color	Order Number
Test Jack	black	0040.1021
Test Jack	red	0040.1022
Test Jack	blue	0040.1024

Most Popular.

Availability for all products can be searched real-time: <http://www.schurter.com/en/Stock-Check/Stock-Check-SCHURTER>

Packaging unit 100 Pcs

Mating Inlets/Plugs

Category / Description



[Test Jacks & Probes Overview complete](#)

PS 1061 Test Probe, Ø 2 mm, 10 A

PS 1061

[Test Jacks & Probes further types to PB 1021](#)