

SERIES 2322-410/483/482/484

Single Turn Consumer Grade Trimmers

RATINGS AND CHARACTERISTICS

	CARBON		CERMET	
	OPEN 410	ENCLOSED 483	OPEN 482	ENCLOSED 484
Resistance range:	47 ohm-4.7M	100 ohm-4.7M	100 ohm-10Mohm	47 ohm-10Mohm
Standard tolerances:	±20%	±20% and ±10%	±20% and ±10%	±20% and ±10%
Temperature characteristic of resistance: (20° to 70°C) For 100 ohm ≤ R ≤ 470 ohm For 1kohm ≤ R ≤ 2M2 For R = 4, 7Mohm For R < 100 ohm	≤ +300 ppm/°C ≥ -500 ppm/°C	±500 ppm/°C ±300 ppm/°C ±1000 ppm/°C	±100 ppm/°C	±100 ppm/°C ±250 ppm/°C
Power rating:	.1 watt @ 40°C .05 watt @ 70°C	.1 watt @ 40°C .05 watt @ 70°C .025 watt @ 85°C	.5 watt @ 70°C derated linearly to 0 watt @125°C	.5 watt @ 70°C derated linearly to 0 watt @125°C
Operating voltage:	150 V max	150 V max	250 V max	250 V max
Isolation voltage:	220 V	220 V	220 V	220 V
Max. operating temp.	70°C	85°C	125°C	125°C
Vibration severity:	10 Hz to 500Hz 0.75mm or 98 m/s ² (whichever is less)	10 Hz to 500Hz 0.75mm or 98 m/s ² (whichever is less)	10 Hz to 500 Hz, 0.75mm or 98 m/s ² (whichever is less)	10 Hz to 500 Hz, 0.75mm or 98 m/s ² (whichever is less)
Bump severity:	390m/s ² -4000 bumps		390m/s ² -4000 bumps	390m/s ² -4000 bumps
Limits of resistance change (a to c) (after 1000 h electrical endurance test)	± (10% R + 0.5ohm)	±(10% R + 0.5ohm) ±(20% R + 1ohm) for value 4.7M	± (2% R + 0.2ohm)	± (2% R + 0.2ohm)
Starting torque:	3.5 to 25mNm	1.5 to 10mNm	<30mNm	<30mNm
Running torque:		2 to 10mNm ratio max ≤ 3 min	3 to 20 mNm	3 to 20 mNm ratio max ≤ 3 min
Total mechanical travel:	260° ±5°	300° ±5°	235° ±5°	300° ±5°
Effective electrical travel:	200° ±10°	285° ±10°	200° ±10°	285° ±10°
Limiting slider current:	Details of specification available on request	$\frac{P_{max}}{\sqrt{R_{nom}}}$	$\frac{P_{max}}{\sqrt{R_{nom}}}$	$\frac{P_{max}}{\sqrt{R_{nom}}}$
Minimum effective resistance:	≤ 2% R or 10 ohm			
Terminal resistance:	≤ 100 mohm	≤ 2%R or 10 ohm (whichever is greater)	≤ 0.5%R or 2 ohm (whichever is greater)	≤ 0.5%R or 2 ohm, (whichever is greater)

7

Cermet Trimmers

SERIES 2322-410/483/482/484

Single Turn Consumer Grade Trimmers

PACKAGING

CARBON		CERMET	
OPEN 410	ENCLOSED 483	OPEN 482	ENCLOSED 484
BULK	BULK or ANTI-STATIC RAILS	BULK	BULK or ANTI-STATIC RAILS

MARKING

OPEN CARBON (410)

The potentiometer is marked with the rated resistance value.

e.g. 220 ohm = 220R
10 kohm = 10K
1 Mohm = 1MO

The rated resistance value is designed in R.K.M. code according to IEC 62 with letter (number) punches on the wiper or knob.

The package is marked with: —code number
—date of production
—quantity

ENCLOSED CARBON (483) / CERMET (484)

The potentiometers are marked with the rated resistance value.

e.g. 220 ohm = 220R
10 kohm = 10K
1 Mohm = 1MO

The rated resistance value is designed in R.K.M. code according to IEC 62 with letter (number) marked with stamping ink on the front side.

The package is marked with: —code number
—date of production
—quantity

OPEN CERMET (482)

The potentiometer is marked with the rated resistance value.

e.g. 220 ohm = 220R
10 kohm = 10K
1 Mohm = 1MO

The rated resistance value is designed in R.K.M. code according to IEC 62 with letter (number) punches on the wiper.

The package is marked with: —code number
—date of production
—quantity

7

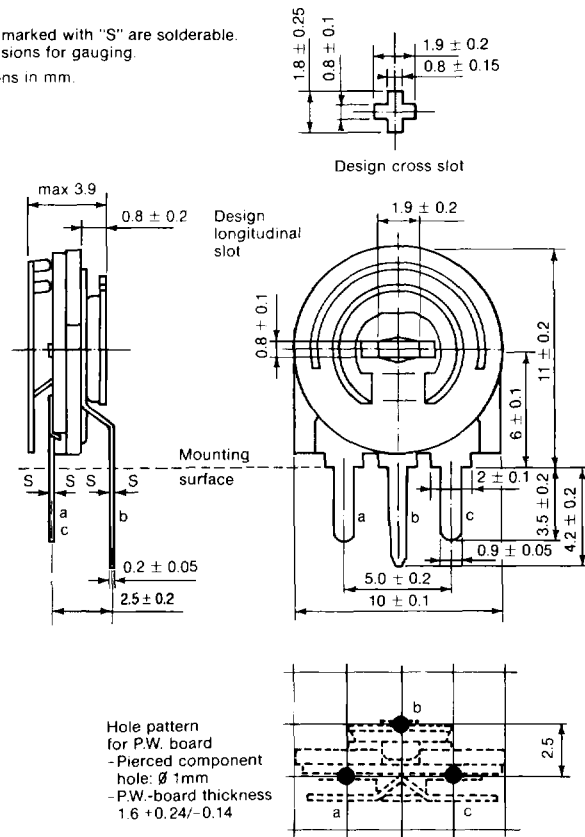
Cermet Trimmers

SERIES 2322-410

10mm Open Carbon Trimmers

2322-410-011

Note: — Surfaces marked with "S" are solderable.
— No dimensions for gauging.
— Dimensions in mm.

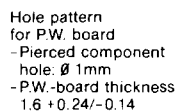


7

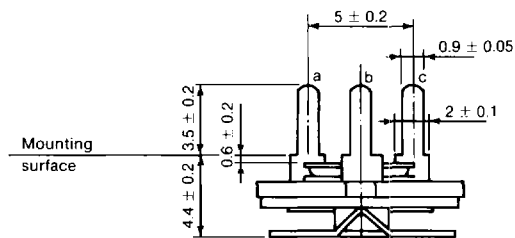
Cermet Trimmers

10mm Open Carbon Trimmers

2322-410-050



Note: — Surfaces marked with "S" are solderable.
— No dimensions for gauging.
— Dimensions in mm.

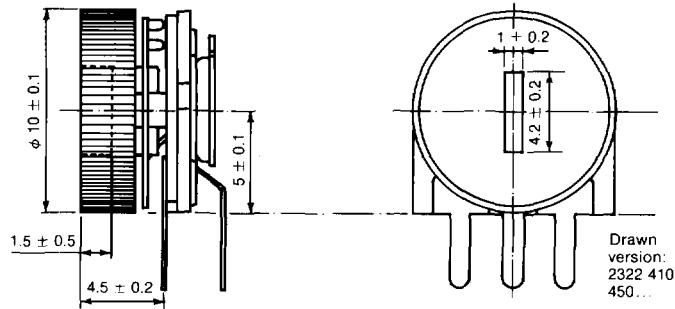


Hole pattern
for P.W. board

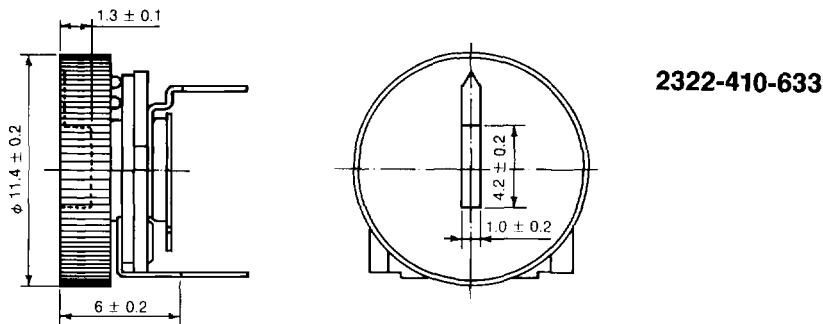
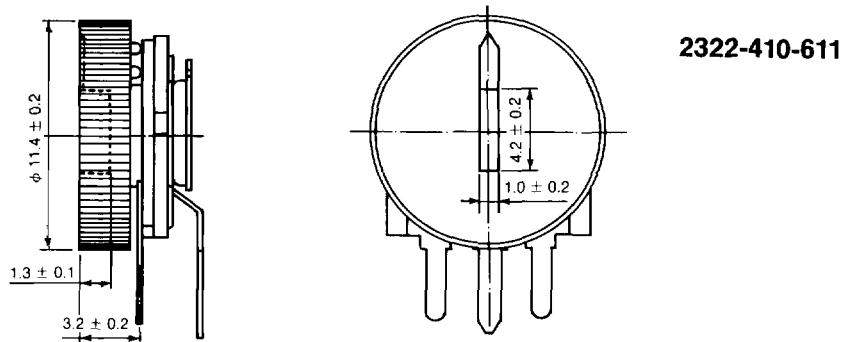
- Pierced component
hole: \varnothing 1mm
- P.W.-board thickness
1.6 +0.24/-0.14

SERIES 2322-410

10mm Open Carbon Trimmers



Note: — No dimensions for gauging.
For other data see Appendix A.



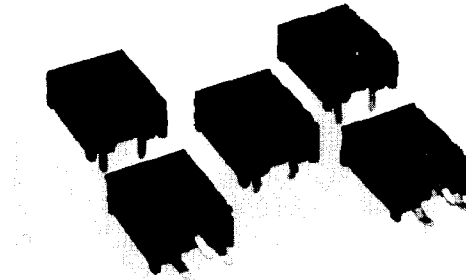
7

Cermet Trimmers

These potentiometers offer stable, high quality performance and can be mounted by automatic insertion machines. They are designed for video, audio and industrial applications. Versions with a knob to facilitate adjustment are available.

SERIES 2322-483

10mm Enclosed Carbon Trimmers



HOW TO SPECIFY

2 3 2 2		483	X	X	XXX
V		V		V	
Code	Potentiometer Type	Code	Law + Tolerance – Type PW Tags – Packaging	Code	Resistance Value
0 Rem. 1	Vertical Non-Insulated cross slot	0	—	101	100Ω
1	Vertical Insulated hexagonal slot	1	—	221	220Ω
2	Vertical Insulated cross slot	2	LIN ±20% Snap-in tags Bulk packaging	471	470Ω
5	Horizontal Non-insulated cross slot	3	LIN ±10% Snap-in tags Bulk packaging	102	1kΩ
6	Horizontal Insulated hexagonal slot	4	LIN ±20% Slide tags Bulk packaging	222	2,2kΩ
7	Horizontal Insulated cross slot	5	LIN ±10% Slide tags Bulk packaging	472	4,7kΩ
		6	LIN ±20% Snap-in tags Rail packaging	103	10kΩ
		7	LIN ±10% Snap-in tags Rail packaging	223	22kΩ
		8	LIN ±20% Slide tags Rail packaging	473	47kΩ
		9	LIN ±10% Slide tags Rail packaging	104	100kΩ
				224	220kΩ
				474	470kΩ
				105	1MΩ
				225	2,2MΩ
				475	4,7MΩ

Rem. 1:
No snap-in tags.

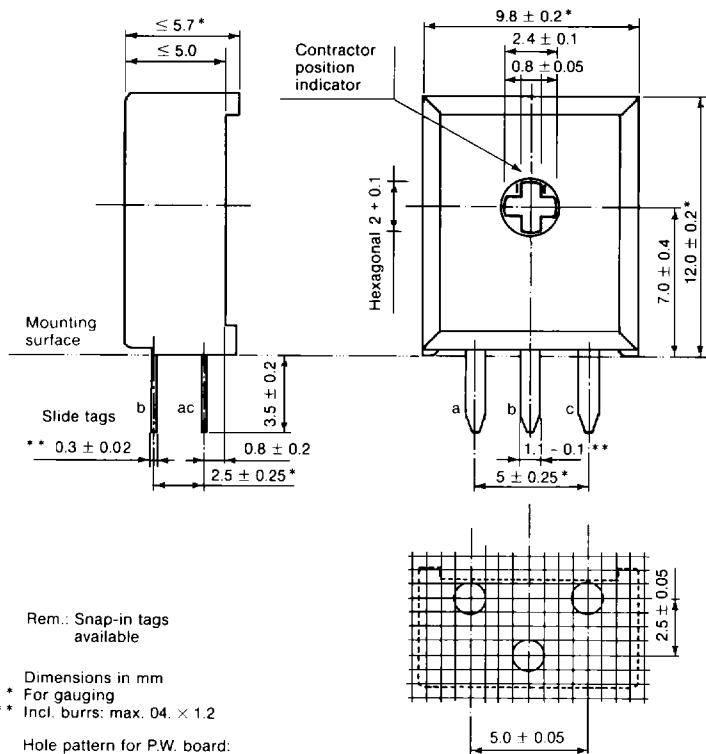
These potentiometers are for preset resistance control with provisions for readjustment. They are particularly suitable for use in radio and television receivers. This series includes types for vertical and horizontal mounting on printed circuit boards. Snap-in pins and cross slot are available on request.

SERIES 2322-483

10mm Enclosed Carbon Trimmers

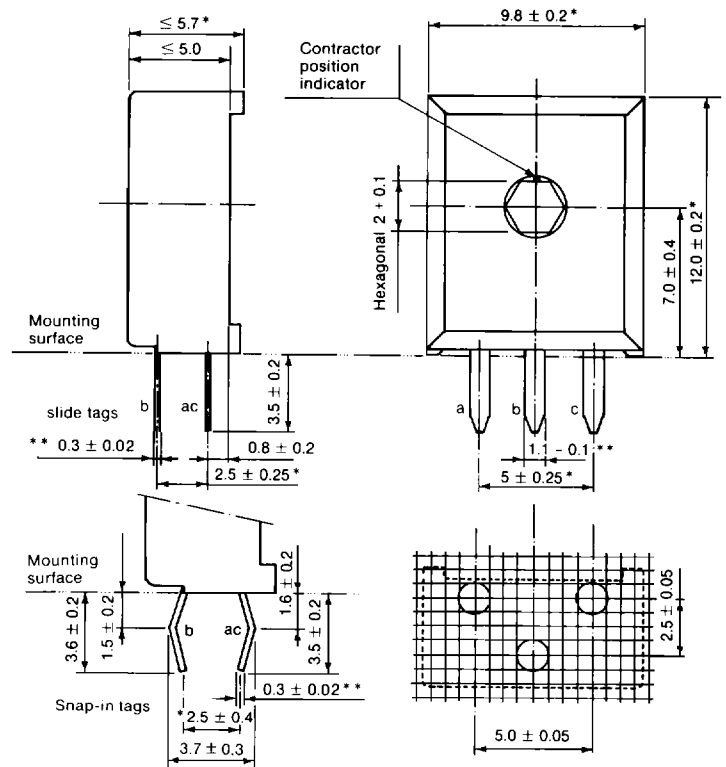
2322-483-02 . . . thru 09

Vertical version, non-insulated hot wiper with cross slot.



2322-483-12 . . . to/incl. 19

Vertical version, insulated cold wiper with hexagonal slot.



7

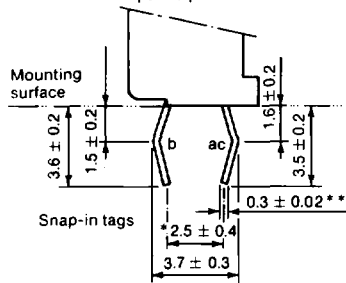
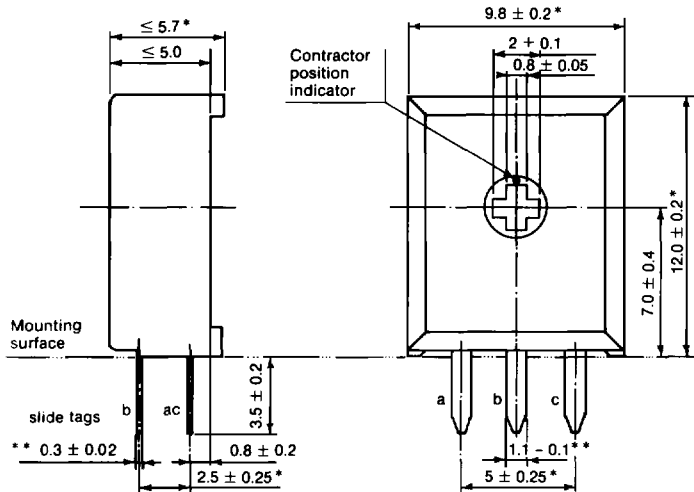
Cermet Trimmers

SERIES 2322-483

10mm Enclosed Carbon Trimmers

2322-483-22 . . . thru 29

Vertical version, insulated cold wiper with cross slot.

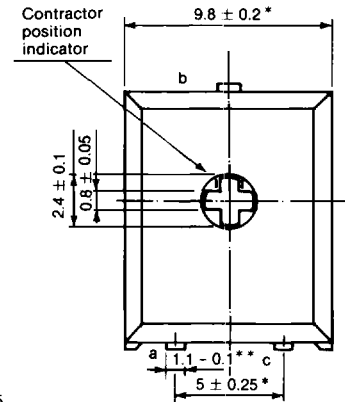
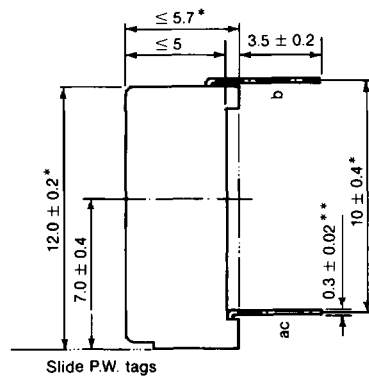


Hole pattern for P.W. board:
Pierced component hole: $\varnothing 1.3$
P.W. board thickness: 1.6 ± 0.24
- 0.14

Dimensions in mm
* For gauging
** Incl. burrs: max. 0.04×1.2

2322-483-52 . . . thru 59

Horizontal version, non-insulated hot wiper with cross slot.



Hole pattern for P.W. board:
Pierced component hole: $\varnothing 1.3$
P.W. board thickness: 1.6 ± 0.24
- 0.14

Dimensions in mm
* For gauging
** Incl. burrs: max. 0.04×1.2

7

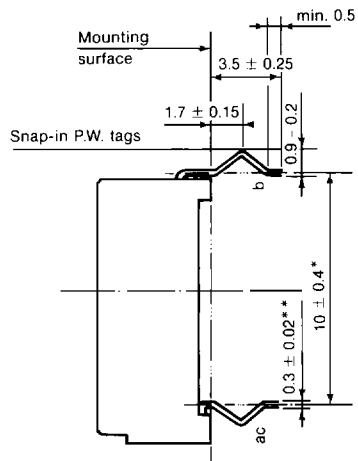
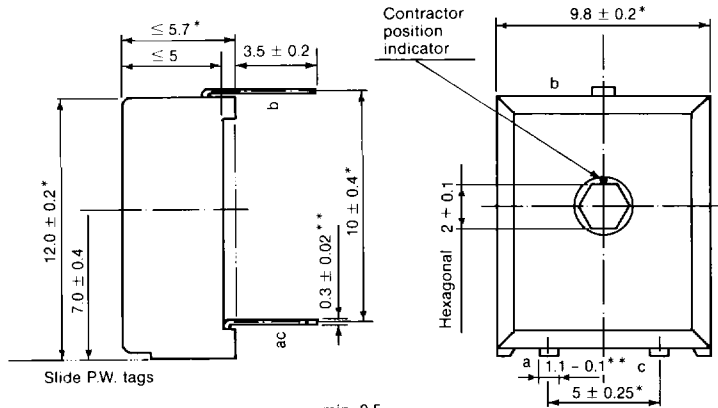
Cermet Trimmers

SERIES 2322-483

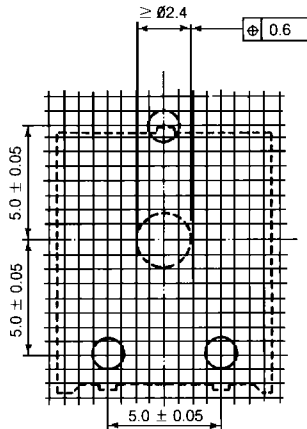
10mm Enclosed Carbon Trimmers

2322-483-62 . . . thru 69

Horizontal version, insulated cold wiper with hexagonal slot.



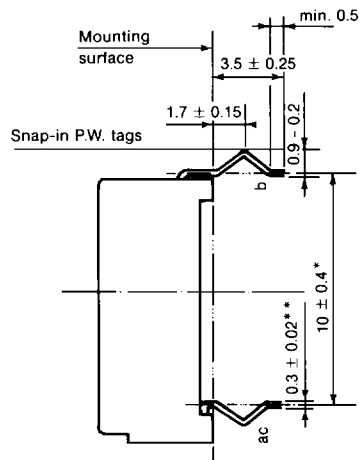
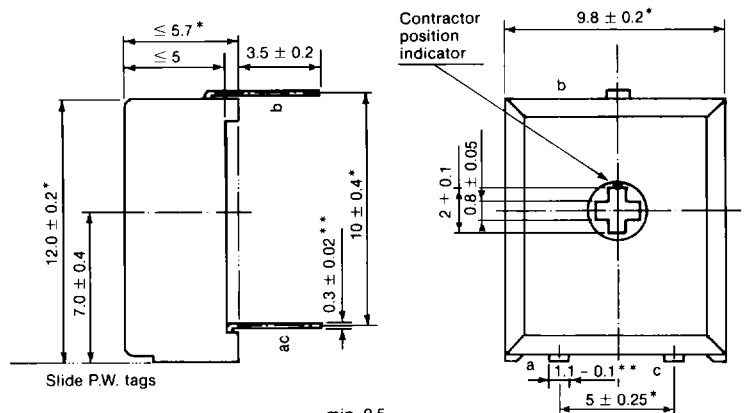
Hole pattern for P.W. board:
Pierced component hole: $\varnothing 1.3$
P.W. board thickness: 1.6 ± 0.24
- 0.14



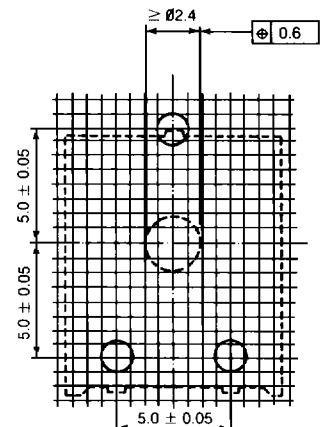
Dimensions in mm
* For gauging
** Incl. burrs: max. 0.04. $\times 1.2$

2322-483-72 . . . thru 79

Horizontal version, insulated cold wiper with cross slot.



Hole pattern for P.W. board:
Pierced component hole: $\varnothing 1.3$
P.W. board thickness: 1.6 ± 0.24
- 0.14



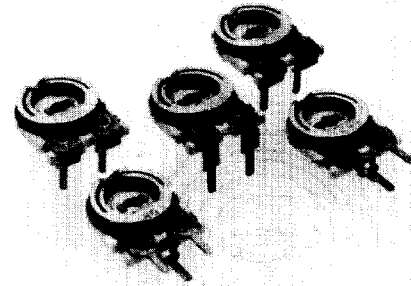
Dimensions in mm
* For gauging
** Incl. burrs: max. 0.04. $\times 1.2$

7

Cermet Trimmers

SERIES 2322-482

10mm Open Cermet Trimmers



HOW TO SPECIFY

V		V			V	
Code	Potentiometer Type	Code	Tolerance	Law	Code	Resistance Value
2	Horizontal (asymmetric) Longitudinal slot	0	20%	Lin	101	100Ω
3	Vertical Longitudinal slot	2	10%	Lin	151	150Ω
4	Horizontal (symmetric) Longitudinal slot				221	220Ω
6	Horizontal (asymmetric) Cross slot				331	330Ω
7	Vertical Cross slot				471	470Ω
8	Horizontal (symmetric) Cross slot				681	680Ω
					102	1kΩ
					152	1,5kΩ
					222	2,2kΩ
					332	3,3kΩ
					472	4,7kΩ
					682	6,8kΩ
					103	10kΩ
					153	15kΩ
					223	22kΩ
					333	33kΩ
					473	47kΩ
					683	68kΩ
					104	100kΩ
					154	150kΩ
					224	220kΩ
					334	330kΩ
					474	470kΩ
					684	680kΩ
					105	1MΩ
					155	1,5MΩ
					225	2,2MΩ
					335	3,3MΩ
					475	4,7MΩ
					685	6,8MΩ
					106	10MΩ

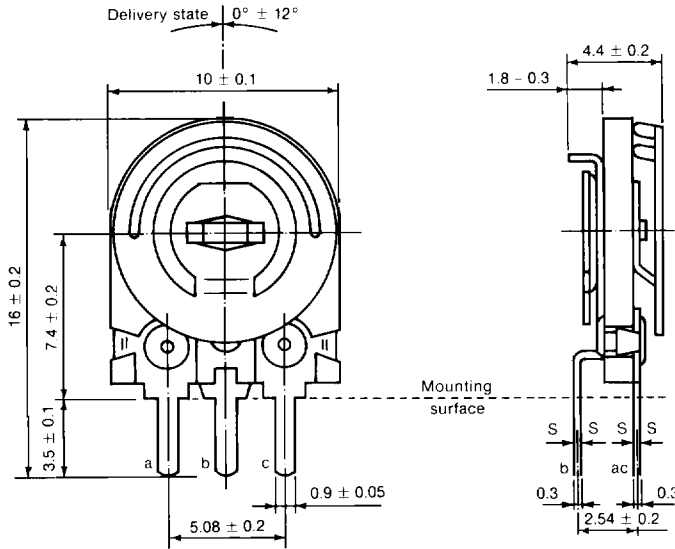
These potentiometers are for preset resistance control with provision for re-adjustments. They are particularly suitable for use in professional apparatus and/or in those applications where stability is of extreme importance. They are available in versions for horizontal and vertical mounting on printed circuit boards.

SERIES 2322-482

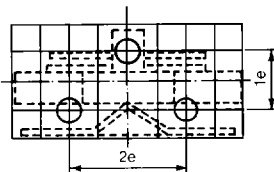
10mm Open Cermet Trimmers

2322 482 3 (Longitudinal slot) and 7 (cross slot)

Surfaces marked with "S" are solderable.

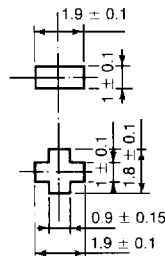


Hole pattern for mounting
on a printed wiring-board.



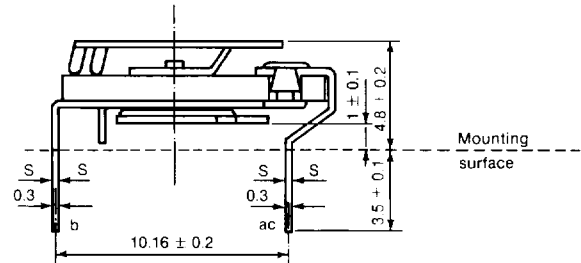
$e = 2.54\text{mm}$
Hole dia: $1.3 \pm 0.13\text{mm}$
All dimensions in mm.

Design
actuating
slot



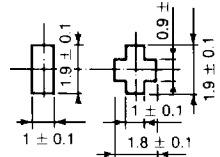
Note: — Surfaces marked with "S" are solderable.

2322 482 4 (Longitudinal slot) and 8 (cross slot)

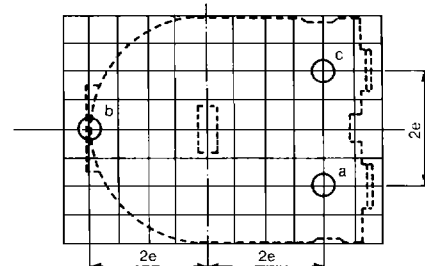
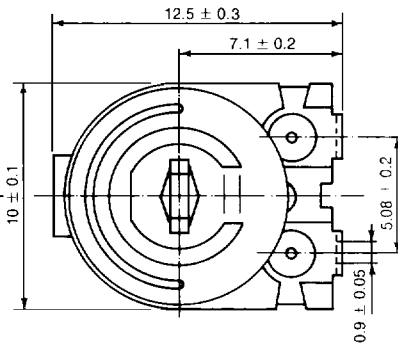


Mounting
surface

Design
actuating
slots



Delivery state $0^\circ \pm 12^\circ$



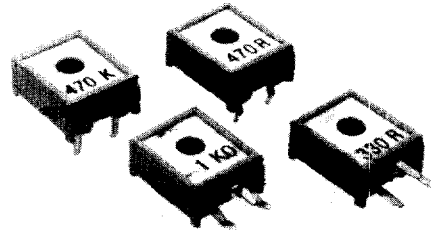
$e = 2.54\text{mm}$
Hole pattern for
mounting on a printed wiring board:
Hole dia: $1.3 \pm 0.13\text{mm}$
Dimensions in mm.

7

Cermet Trimmers

SERIES 2322-484

10mm Enclosed Cermet Trimmers



HOW TO SPECIFY

V		V		V	
Code	Potentiometer Type	Code	Law + Tolerance – Type PW Tags – Packaging	Code	Resistance Value
–	–	0	–	479	47Ω
1	Vertical Insulated hexagonal slot	1	–	689	68Ω
2	Vertical Insulated cross slot	2	LIN ± 20% Snap-in tags Bulk packaging	101	100Ω
–	–	3	LIN ± 10% Snap-in tags Bulk packaging	151	150Ω
6	Horizontal Insulated hexagonal slot	4	LIN ± 20% Slide tags Bulk packaging	221	220Ω
7	Horizontal Insulated cross slot	5	LIN ± 10% Slide tags Bulk packaging	331	330Ω
		6	LIN ± 20% Snap-in tags Rail packaging	471	470Ω
		7	LIN ± 10% Snap-in tags Rail packaging	681	680Ω
		8	LIN ± 20% Slide tags Rail packaging	102	1kΩ
		9	LIN ± 10% Slide tags Rail packaging	152	1.5kΩ
				222	2.2kΩ
				332	3.3kΩ
				472	4.7kΩ
				682	6.8kΩ
				103	10kΩ
				153	15kΩ
				223	22kΩ
				333	33kΩ
				473	47kΩ
				683	68kΩ
				104	100kΩ
				154	150kΩ
				224	220kΩ
				334	330kΩ
				474	470kΩ
				684	680kΩ
				105	1MΩ
				155	1.5MΩ
				225	2.2MΩ
				335	3.3MΩ
				475	4.7MΩ
				685	6.8MΩ
				106	10MΩ

7

Cermet Trimmers

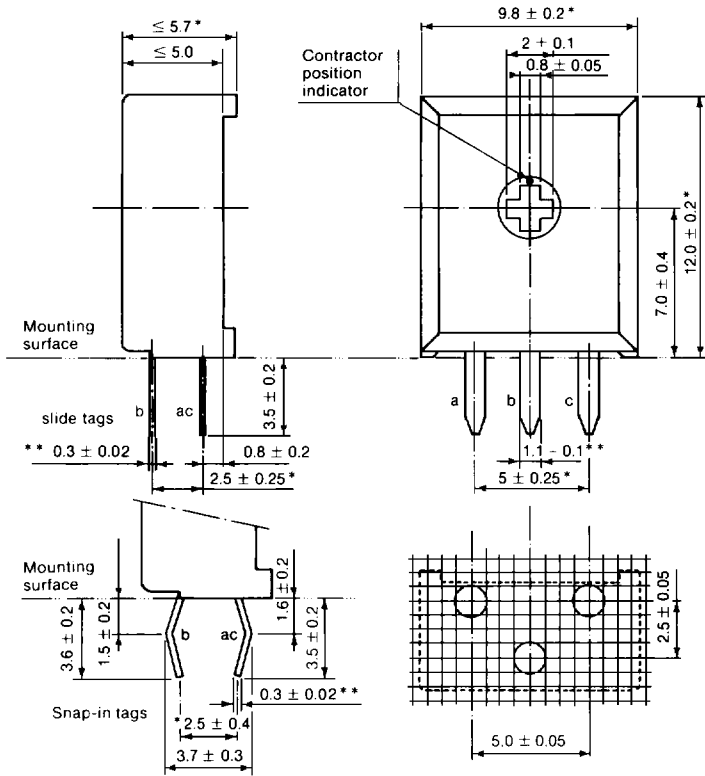
These potentiometers offer stable high quality performance and can be mounted by automatic insertion machines. They are designed for video, audio, and industrial applications. Versions for vertical and horizontal mounting are available. A hexagonal slot version can be provided with a knob to facilitate manual adjustment.

SERIES 2322-484

10mm Enclosed Cermet Trimmers

2322 484 22 . . . to/incl. 29 . . .

Vertical version, insulated cold wiper with cross slot.

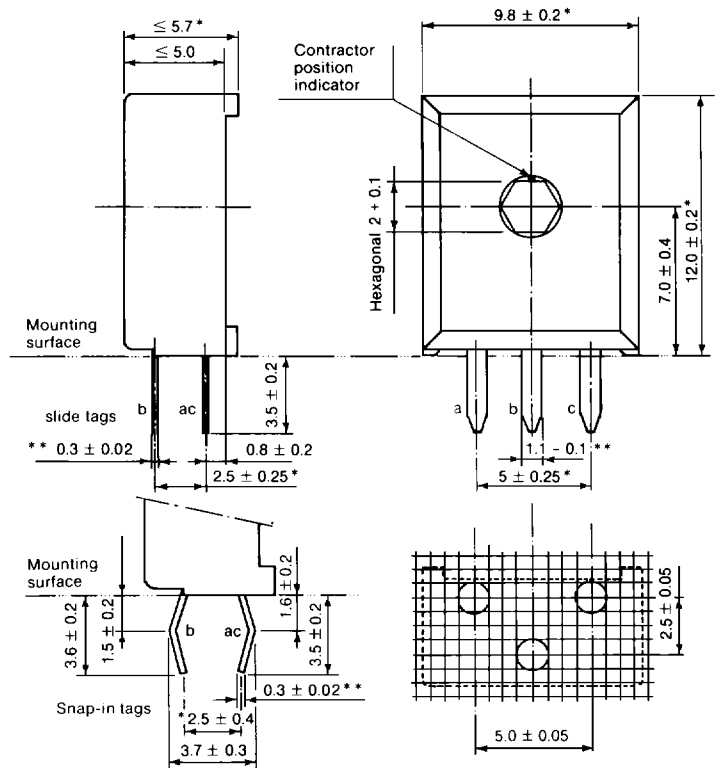


Hole pattern for P.W. board:
Pierced component hole: $\varnothing 1.3$
P.W. board thickness: 1.6 ± 0.24
- 0.14

Dimensions in mm
* For gauging
** Incl. burrs: max. 0.04×1.2

2322 484 12 . . . to/incl. 19 . . .

Vertical version, insulated cold wiper, hexagonal slot.



Hole pattern for P.W. board:
Pierced component hole: $\varnothing 1.3$
P.W. board thickness: 1.6 ± 0.24
- 0.14

Dimensions in mm
* For gauging
** Incl. burrs: max. 0.04×1.2

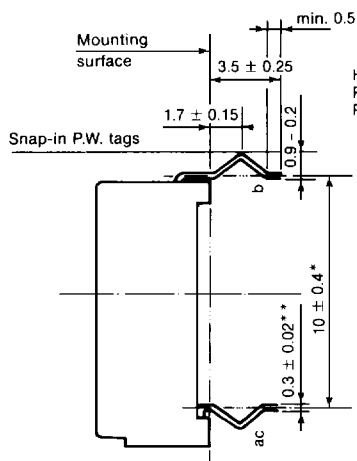
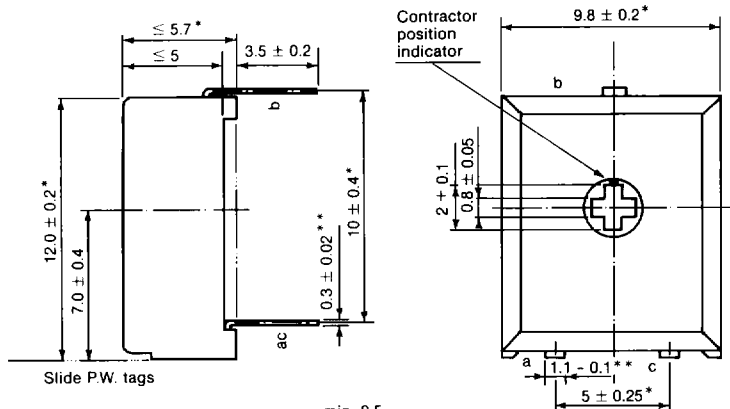
7

Cermet Trimmers

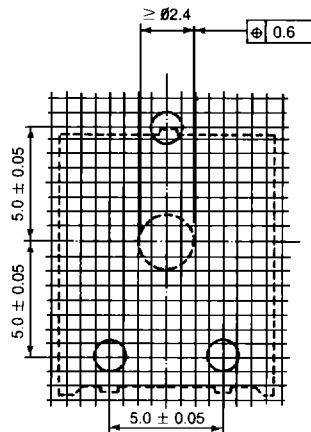
10mm Enclosed Cermet Trimmers

2322 484 72 . . . thru 79 . . .

Horizontal version, insulated cold wiper with cross slot.



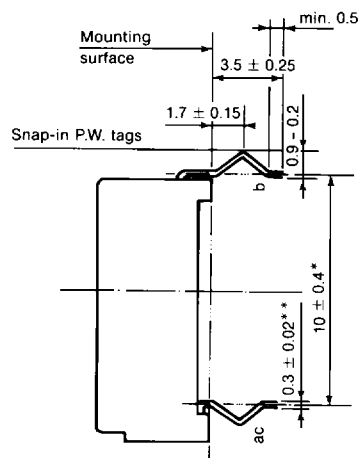
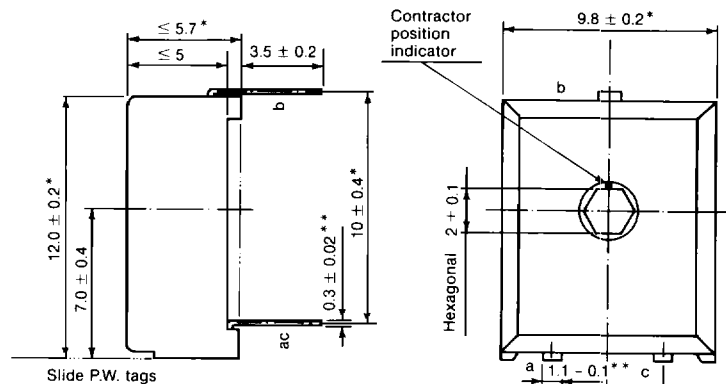
Hole pattern for P.W. board:
Pierced component hole: $\varnothing 1.3$
P.W. board thickness: $1.6 + 0.24$
 $- 0.14$



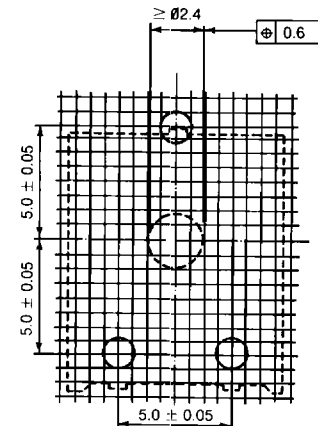
Dimensions in mm
* For gauging
** Incl. burrs: max. 04. \times 1.2

2322 484 62...thru 69...

Horizontal version, insulated cold wiper with hexagonal slot.



Hole pattern for P.W. board:
Pierced component hole: $\varnothing 1.3$
P.W. board thickness: $1.6 + 0.24$
 $- 0.14$



Dimensions in mm
* For gauging
* * Incl. burrs: max. 04. x 1.2