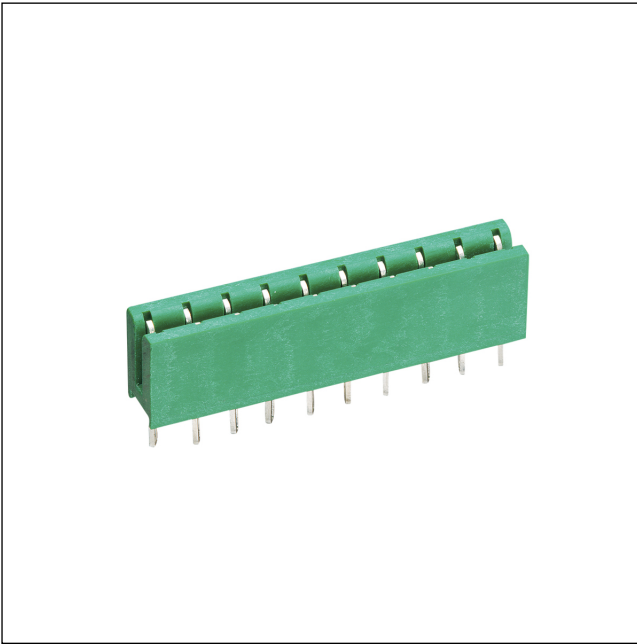


51

5 U

Direct connectors for insert cards, pitch 2.5/2.54/5.0/ 5.08 mm



Socket board for direct mating, with solder eyes

---

State: Phasing out

---

51

5 U

---

**Environmental conditions**

Temperature range -25 °C/+100 °C

---

**Materials**

Insulating body PPO  
Contact spring CuSn, pre-nickel and tin-plated

---

**Mechanical data**

Mating with Leiterplatte 1,5 ± 0,14 mm

---

**Electrical data (at T<sub>amb</sub> 20 °C)**

Contact resistance ≤ 3 mΩ  
Rated current 5 A  
Rated voltage 250 V AC  
Rated impulse voltage ≥ 3,0 kV

---

**Associated products**

Accessories  
[☞ F](#)                      [☞ FD](#)                      [☞ FF](#)  
[☞ FL](#)                      [☞ SP 1](#)

---

Designation	Pole Number	PU (Pieces)	MDQ (Pieces)
5 U 03	3	200	2000
5 U 04	4	200	2000
5 U 05	5	200	2000
5 U 06	6	200	2000
5 U 07	7	200	2000
5 U 08	8	200	2000
5 U 09	9	200	2000
5 U 10	10	200	2000
5 U 11	11	200	2000
5 U 12	12	200	2000
5 U 13	13	200	2000
5 U 14	14	200	2000
5 U 15	15	200	2000
5 U 16	16	200	2000
5 U 17	17	200	2000
5 U 18	18	200	2000
5 U 19	19	200	2000
5 U 20	20	200	2000
5 U 21	21	200	2000
5 U 22	22	200	2000
5 U 23	23	200	2000
5 U 24	24	200	2000
5 U 25	25	200	2000
5 U 26	26	200	2000
5 U 27	27	200	2000
5 U 28	28	200	2000
5 U 29	29	200	2000
5 U 30	30	200	2000
5 U 31	31	200	2000
5 U 32	32	200	2000
5 U 33	33	200	2000

**Packaging:**

in bulk, in a cardboard box