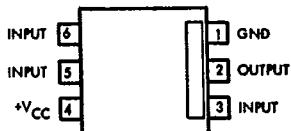


# ECG<sup>®</sup> Semiconductors

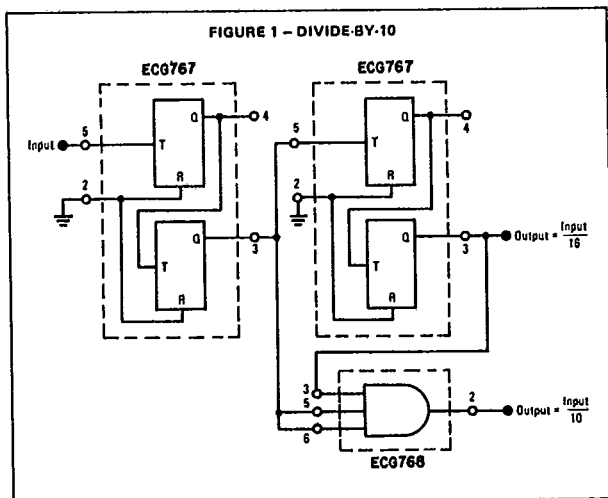
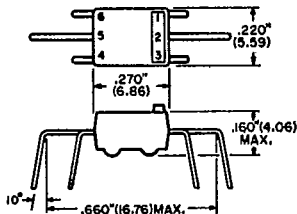
## ECG768 3-INPUT "AND" GATE

- Wide Operating Voltage – to 18 Volts
- Compatible with TTL and DTL
- Economical 6-Lead Plastic Package
- Regulated Supply Not Required



**MAXIMUM RATINGS**

Rating	Symbol	Value	Unit
Power Supply Voltage	V <sub>CC</sub>	19	Vdc
Power Dissipation @ T <sub>A</sub> = 25°C (Package Limitation) Derate above 25°C	P <sub>D</sub>	1.0	Watt
	1/θ <sub>JA</sub>	10	mW/°C
Operating Temperature Range	T <sub>A</sub>	0 to +75	°C
Operating and Storage Junction Temperature Range	T <sub>J</sub> , T <sub>stg</sub>	-40 to +125	°C



ELECTRICAL CHARACTERISTICS (V<sub>CC</sub> = 18 Vdc, T<sub>A</sub> = +25°C unless otherwise noted)

Characteristic	Figure	Symbol	Min	Max	Unit
Output Voltage – Low Pin 3 = V <sub>CC</sub> ; Pin 5 = V <sub>CC</sub> ; Pin 6 = GND Pin 5 = GND; Pin 6 = V <sub>CC</sub> ; Pin 3 = V <sub>CC</sub> Pin 3 = GND; Pin 5 = V <sub>CC</sub> ; Pin 6 = V <sub>CC</sub>	2	V <sub>OL</sub>	–	0.6	Vdc
Output Voltage – High	3	V <sub>OH</sub>	15	–	Vdc
Drain Current	3	I <sub>D</sub>	–	10	mA <sub>dc</sub>

FIGURE 2 – OUTPUT VOLTAGE (LOW) TEST CIRCUIT

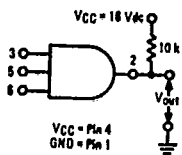


FIGURE 3 – OUTPUT VOLTAGE (HIGH) TEST CIRCUIT

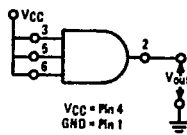


FIGURE 4 – CIRCUIT SCHEMATIC

