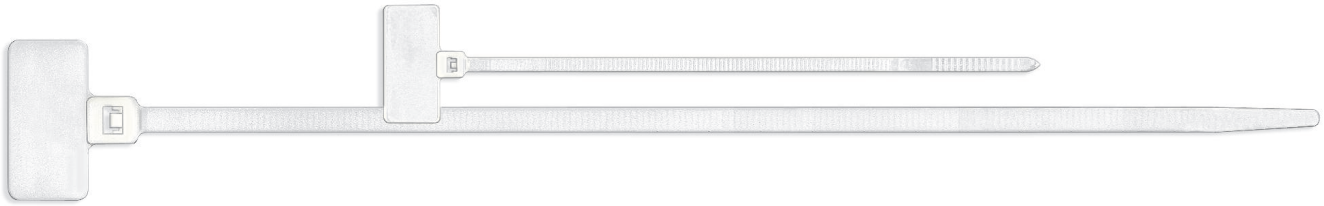



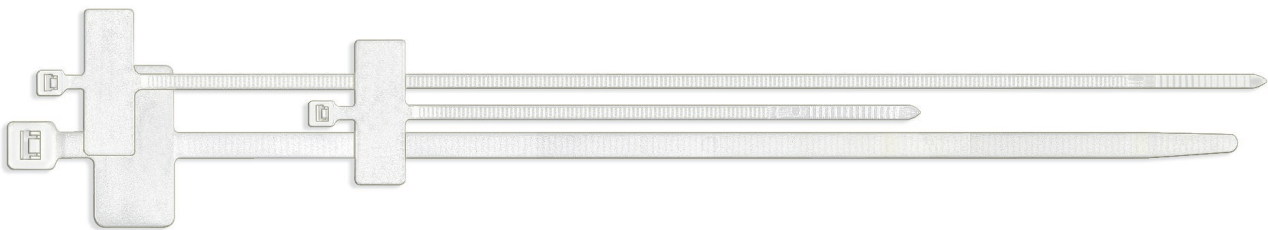



• **TE cable ties**
 with horizontal write-on area - inside serrations



type	article number	write-on area dimensions mm	dimensions length x width mm	maximum bundle Ø mm	tensile strength mini. (daN)	
110/25 TE-C	0186 0820 018	20 x 9	110 x 2,5	18	8	100
200/47 TE-C	0186 0368 018	28 x 13	210 x 4,7	48	22	100


• **TI cable ties**
 with horizontal write-on area - inside serrations



type	article number	write-on area dimensions mm	dimensions length x width mm	maximum bundle Ø mm	tensile strength mini. (daN)	
100/25 TI-C	0186 0840 018	25 x 8	100 x 2,5	18	8	100
200/25 TI-C	0186 0850 018	25 x 8	200 x 2,5	50	8	100
200/47 TI-C	0186 0367 018	28 x 13	200 x 4,7	48	22	100

• **LI cable ties**
 with vertical write-on area - inside serrations



type	article number	write-on area dimensions mm	dimensions length x width mm	maximum bundle Ø mm	tensile strength mini. (daN)	
200/47 LI-C	0186 0860 018	28 x 13	200 x 4,7	48	22	100
370/48 LI-C	0186 0470 018	28 x 13	370 x 4,8	85	22	100



Waterproof pens for marking: see page C14/5

