

T 238



Euromas
 Euromas enclosure, ABS

Order no.: 03238000

Colour of enclosure group

Light grey, similar to RAL 7035; special colours on request

Protection class

Depending on the model: IP 65 or IP 66/DIN EN 60529

Enclosure material

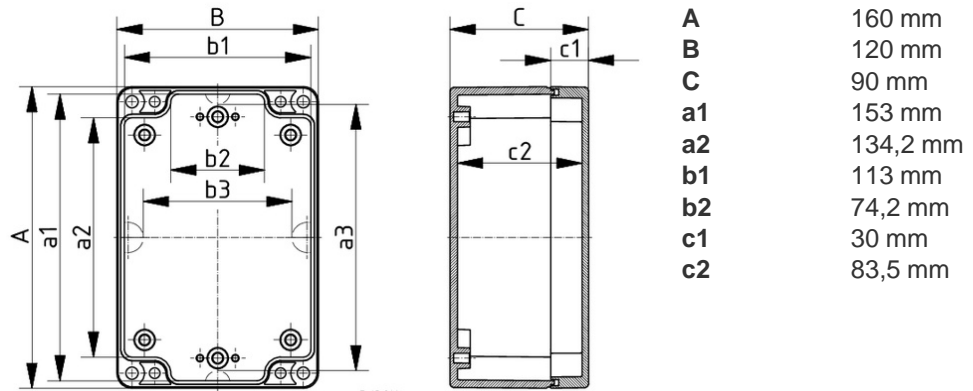
Enclosure material: ABS, PC (UV stabilised) and selected sizes in PC UL 94 V0 (additional UL 94 V0 versions on request), seal made of CR; for details, see Technical Information

Scope of delivery: Lid and base, lid screws made of V2A, self-tapping screws for mounting bosses

Note: * = Available on request. Accessories: see following pages.

SV = version with quick-release fastener

c3 = Ingress protection acc. to DIN EN 60529



Technical drawings

Catalogue drawing in DXF format:

[03238000_T-238.dxf](#) (678 KB)

Catalogue drawing in PDF format:

[03238000_T-238.pdf](#) (72 KB)

3D product data in STEP format:

[Registration necessary](#)

Basic drawing for processing work:

[03238000_T-238-G.dxf](#) (325 KB)

Chapter download

[Euromas-ABS_Polycarbonate_GB.pdf](#) (531 KB)

Accessories



Mounting plates, laminated paper (Pertinax), galvanised steel for version 260

22001100

[M](#)

For EM/ET 238, M/T 238, M/T 246



Rubber feet, plug-in

22003300

[E](#)

For M/T 208-260



Silicone seal for lid

22004300

[SIL](#)

For M/T 238, M/T 246



Wall brackets on rear, screw-on, polycarbonate

22004900

[WL](#)

For M/T 210-243, M/T 246-253



DIN rails DIN EN 60715 TH 15

22002000

[TS 15](#)

For M/T 219-220, M/T 231-235, M/T 238, M/T 246, P 325, M/T 2381



DIN rails DIN EN 60715 G 32

22002010

[TS 32](#)

For M/T 219-220, M/T 231-235, M/T 238, M/T 246, P 316, P 325, M/T 2381



DIN rails DIN EN 60715 TH 35

22002020

[TS 35](#)

For M/T 219-220, M/T 231-235, M/T 238, M/T 246, P



Threaded inserts for mounting bosses



59002810 [DODGE M3x6,5](#) ND = 4.0 x 6.5
59002820 [DODGE M4x9,5](#) ND = 5.4 x 9.5



Set of hinges

22006000 [SchM](#)