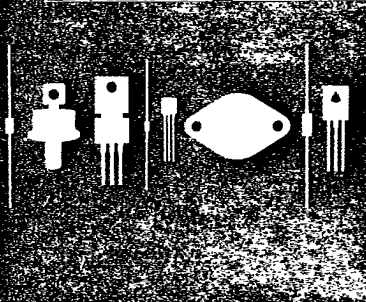


92 DE 1989963 0000323 2

Central Semiconductor Corp.  
 Central Semiconductor Corp.  
 Central Semiconductor Corp.  
**Central Semiconductor Corp.**  
 145 Adams Avenue  
 Hauppauge, New York 11788



BYX10  
 SILICON HIGH VOLTAGE RECTIFIER  
 0.5 AMP, 1600 VOLTS

CASE 101

DESCRIPTION

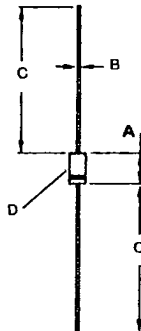
The CENTRAL SEMICONDUCTOR BYX10 type is an axial lead epoxy molded silicon rectifier designed for general purpose, very high voltage applications. For higher current applications, (up to 2.0 Amps) contact the factory for information on CR2-160 rectifier (2.0 Amps, 1600 Volts).

MAXIMUM RATINGS (TA=25°C unless otherwise noted)

	SYMBOL		UNIT
Non-Repetitive Peak Reverse Voltage (t=10ms)	VRSM	1600	V
Peak Repetitive Reverse Voltage	VRRM	1600	V
DC Blocking Voltage	VR	1600	V
Working Reverse Voltage	VRWM	800	V
Average Forward Current	IF(AV)	0.5	A
Repetitive Peak Forward Current	IFRM	3.0	A
Non-Repetitive Peak Forward Current (t=10ms, TA=150°C)	IFSM	15	A
Peak Forward Surge Current	IFSM	50	A
Operating and Storage Junction Temperature	TJ, TSTG	-65 TO +175	°C
Typical Thermal Resistance	θJA	50	°C/W

ELECTRICAL CHARACTERISTICS (TA=25°C unless otherwise noted)

SYMBOL	TEST CONDITIONS	MIN	TYP	MAX	UNIT
IR	VR=800V			1.0	µA
IR	VR=800V, TA=125°C			50	µA
IR	VR=1600V			10	µA
VF	IF=1.0A		0.9	1.1	V
VF	IF=2.0A		1.0	1.6	V



	INCHES		mm	
	MIN	MAX	MIN	MAX
A	.230	.300	5.8	7.6
B	.028	.034	0.7	0.9
C	1.0	-	25.4	-
D	.104	.140	2.6	3.6