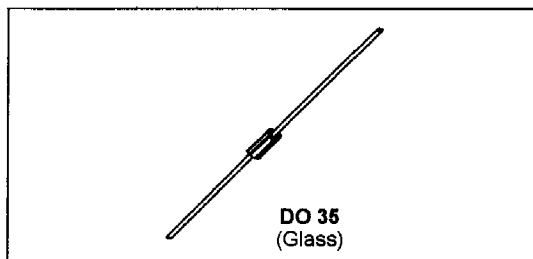


BAT 19

SMALL SIGNAL SCHOTTKY DIODE

DESCRIPTION

Metal to silicon junction diode primarily intended for UHF mixers and ultrafast switching applications. Matched batches are available on request.



ABSOLUTE MAXIMUM RATINGS (limiting values)

Symbol	Parameter	Value	Unit
V_{RRM}	Repetitive Peak Reverse Voltage	10	V
I_F	Forward Continuous Current* $T_a = 25^\circ\text{C}$	30	mA
I_{FSM}	Surge non Repetitive Forward Current* $t_p \leq 1\text{s}$	60	mA
T_{stg} T_J	Storage and Junction Temperature Range	- 65 to + 150 - 65 to + 125	$^\circ\text{C}$ $^\circ\text{C}$
T_L	Maximum Lead Temperature for Soldering during 10s at 4mm from Case	230	$^\circ\text{C}$

THERMAL RESISTANCE

Symbol	Test Conditions	Value	Unit
$R_{th(j-a)}$	Junction-ambient*	400	$^\circ\text{C/W}$

ELECTRICAL CHARACTERISTICS

STATIC CHARACTERISTICS

Symbol	Test Conditions	Min.	Typ.	Max.	Unit
V_{BR}	$T_{amb} = 25^\circ\text{C}$ $I_R = 10\mu\text{A}$	10			V
$V_F(1)$	$T_{amb} = 25^\circ\text{C}$ $I_F = 1\text{mA}$			0.4	V
	$T_{amb} = 25^\circ\text{C}$ $I_F = 20\text{mA}$			1	
$I_R(1)$	$T_{amb} = 25^\circ\text{C}$ $V_R = 5\text{V}$			0.1	μA

DYNAMIC CHARACTERISTICS

Symbol	Test Conditions	Min.	Typ.	Max.	Unit
C	$T_{amb} = 25^\circ\text{C}$ $V_R = 0\text{V}$ $f = 1\text{GHz}$			1.2	pF
τ	$T_{amb} = 25^\circ\text{C}$ $I_F = 20\text{mA}$ Krakauer Method			100	ps
F (2)	$T_{amb} = 25^\circ\text{C}$ $f = 1\text{GHz}$		6		dB

* On infinite heatsink with 4mm lead length

(1) Pulse test: $t_p \leq 300\mu\text{s}$ $\delta < 2\%$.

(2) Noise figure test:

- diode is inserted in a tuned stripline circuit
- local oscillator frequency 1GHz
- local oscillator power 1mW
- intermediate frequency amplifier, tuned on 30MHz, has a noise figure 1.5dB

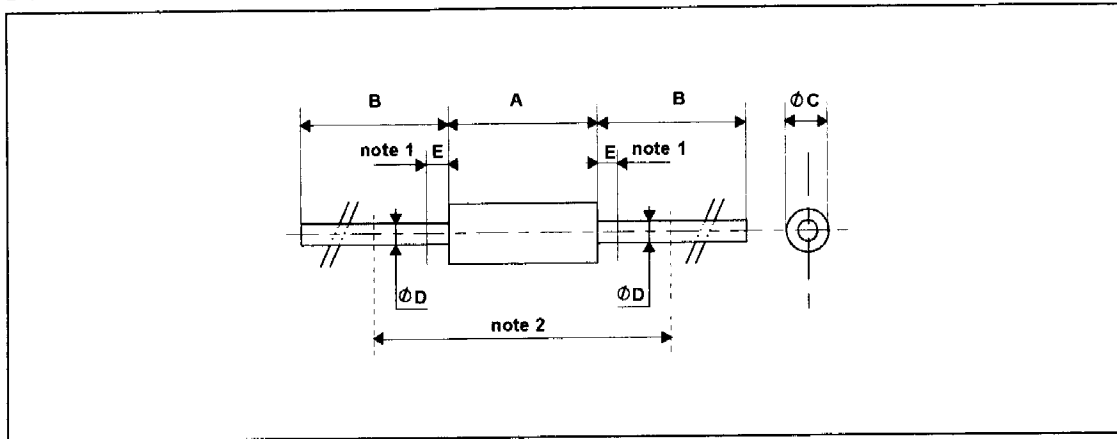
Matched batches available on request. Test conditions (forward voltage and/or capacitance) according to customer specification.



NJ Semi-Conductors reserves the right to change test conditions, parameter limits and package dimensions without notice. Information furnished by NJ Semi-Conductors is believed to be both accurate and reliable at the time of going to press. However NJ Semi-Conductors assumes no responsibility for any errors or omissions discovered in its use. NJ Semi-Conductors encourages customers to verify that datasheets are current before placing orders.

PACKAGE MECHANICAL DATA

DO 35 Glass



REF.	DIMENSIONS				NOTES
	Millimeters		Inches		
	Min.	Max.	Min.	Max.	
A	3.050	4.500	0.120	0.117	1 - The lead diameter $\varnothing D$ is not controlled over zone E 2 - The minimum axial length within which the device may be placed with its leads bent at right angles is 0.59"(15 mm)
B	12.7		0.500		
$\varnothing C$	1.530	2.000	0.060	0.079	
$\varnothing D$	0.458	0.558	0.018	0.022	
E		1.27		0.050	

Cooling method : by convection and conduction
 Marking: clear, ring at cathode end.
 Weight: 0.15g

This datasheet has been downloaded from:

www.DatasheetCatalog.com

Datasheets for electronic components.