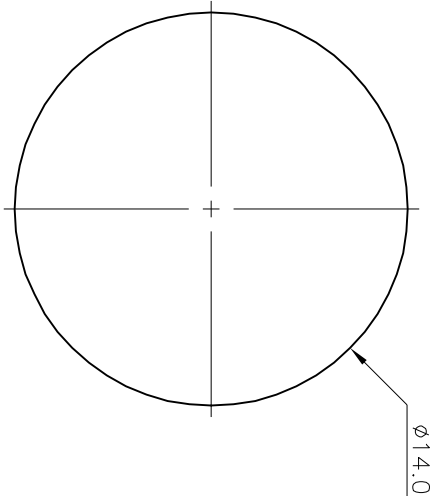


RECOMMENDED PANEL CUTOOUT



SPECIFICATION :

1. CURRENT CARRYING CAPACITY
 - 1) AC : 100V 1A MAX.
 - 2) DC : 12V 2A MAX.
2. CONTACT RESISTANCE : 30m OHM MAX.
3. INSULATION RESISTANCE : 50M OHM MIN. AT DC 250V.
4. VOLTAGE WITHSTANCE : AC 250V FOR ONE MINUTE.
5. INSERTION FORCE : 1.0 - 4.5 KG
- WITHDRAWAL FORCE : 0.8 - 3.0 KG .
6. THE OPERATING TEMPERATURE: -40 °C ~ +85°C.
7. THE LIFE CYCLES: 1000 CYCLES.
8. Unless other specified, the tolerance is ± 0.2mm.

ARRANGEMENT OF CONTACTS	NO. OF CONTACTS	MODEL NO.	HOLE LAYOUT	VERSION		REVISION	PROJECTION	PRODUCT	DRAWING NO.	SCALE
				P/N	PART NAME					
	3	MDC-183		A1	VERSION			3-8PIN MINI DIN SOCKET, SCREW TYPE	MDC-183 TO MDC-188	5/1
	4	MDC-184			REVISION			3-8PIN MINI DIN SOCKET, SCREW TYPE	MDC-183 TO MDC-188	5/1
	5	MDC-185			REVISION			3-8PIN MINI DIN SOCKET, SCREW TYPE	MDC-183 TO MDC-188	5/1
	6	MDC-186			REVISION			3-8PIN MINI DIN SOCKET, SCREW TYPE	MDC-183 TO MDC-188	5/1
	7	not available			REVISION			3-8PIN MINI DIN SOCKET, SCREW TYPE	MDC-183 TO MDC-188	5/1
	8	MDC-188			REVISION			3-8PIN MINI DIN SOCKET, SCREW TYPE	MDC-183 TO MDC-188	5/1
				3.	CONTACTOR	3~8	PBR 0.2 t	SILVER PLATED		
				2.	EARTH TERMINAL	1	BRASS 0.4 t	TIN		
				1.	BODY	1	P.B.T.			UL94V-0
				P/N	PART NAME	Q'TY	MATERIAL	PLATING		REMARKS
				VERSION	APPROVAL BY	CHECKED BY	DRAWN BY			UNITS
				A1			<i>ling</i>	<i>98-12-28</i>	mm	