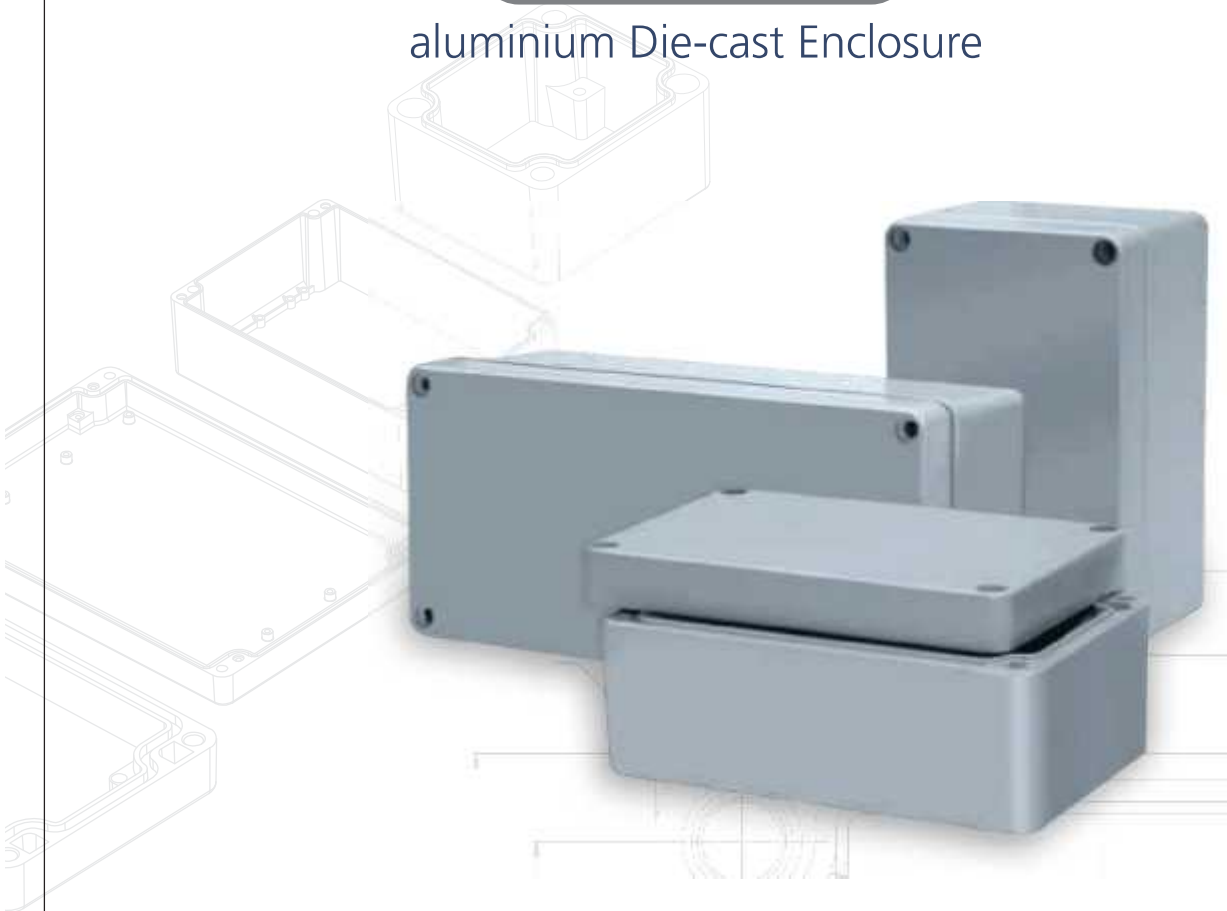




aluminium Die-cast Enclosure





Technical Data Sheet :

Die-cast Aluminium Enclosure

- Material: Al Si 12, as per DIN EN 1706
- Components: Fastening threads M4 / M6 in the enclosure bottom.
- Ingress protection: IP65 / IP66 / IP67 as per IEC60529
- Gasket: Neoprene gasket (-40°C to +120°C)
- Lid Screws: Stainless Steel 1.4301 (A2), captive
- Surface: Painted / Non-Painted

- Standard Color: RAL 7001, 7031, 7032, 7035, 7038, Black RAL 9004

Optionally available:

- External Mounting Bracket: Stainless Steel 1.4301 (A2)
- Mounting Plates: Sheet Steel, galvanized
- Gasket: Silicon gasket (-50°C to +140°C)
- Surface: Corrosion protection, special colors
- Certified: UL & Ex*
- Special Inserts to avoid Galvanic Corrosion

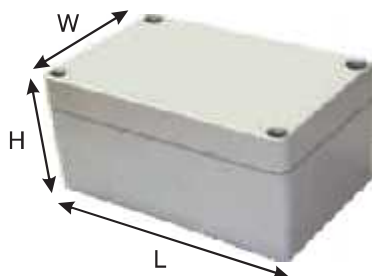
Certifications



*Under approval

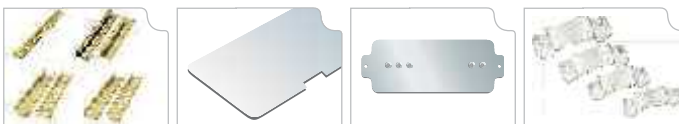
Specification sheet with Accessories

Raychem Part No.	Y--> Yes			Standard Accessories						Certification					
	Sizes-Dimensions External			Moun- ting Plate	M6 External Brackets	External Hinges	Internal Hinge	DIN rail for terminals		Silicon Gasket	IP 65	IP 66	IP67	Impact Test IK	EMC
	Length	Width	Height					TS15	TS35						
Rj01	50	45	30	-	-	-	-	-	-	Y	Y	Y	Y	IK 09	Y
Rj02	98	64	34	-	-	-	-	-	-	Y	Y	Y	Y	IK 09	Y
RJ03	150	64	34	-	-	-	-	-	-	Y	Y	Y	Y	IK 09	Y
RJ04	58	64	34	-	-	-	-	-	-	Y	Y	Y	Y	IK 09	Y
RJ05	75	80	57	Y	-	-	-	Y	-	Y	Y	Y	Y	IK 09	Y
RJ06	125	80	57	Y	-	-	-	Y	-	Y	Y	Y	Y	IK 09	Y
RJ07	175	80	57	Y	-	-	-	Y	-	Y	Y	Y	Y	IK 09	Y
RJ08	250	80	57	Y	-	-	-	Y	-	Y	Y	Y	Y	IK 09	Y
RJ09	100	100	81	Y	Y	Y	-	Y	-	Y	Y	Y	Y	IK 09	Y
RJ10	150	100	81	Y	Y	Y	-	Y	-	Y	Y	Y	Y	IK 09	Y
RJ25	200	100	80	Y	Y	Y	-	Y	-	Y	Y	Y	Y	IK 09	Y
RJ11	122	120	81	Y	Y	Y	-	-	Y	Y	Y	Y	Y	IK 09	Y
RJ21	220	120	81	Y	Y	Y	-	-	Y	Y	Y	Y	Y	IK 09	Y
RJ22	122	120	91	Y	Y	Y	-	-	Y	Y	Y	Y	Y	IK 09	Y
RJ12	220	120	90	Y	Y	Y	-	-	Y	Y	Y	Y	Y	IK 09	Y
RJ27	200	140	90	Y	Y	Y	Y	-	Y	Y	Y	Y	Y	IK 09	Y
RJ26	220	120	117	Y	Y	Y	-	-	Y	Y	Y	Y	Y	IK 09	Y
RJ15	160	160	91	Y	Y	Y	Y	-	Y	Y	Y	Y	Y	IK 09	Y
RJ13	260	160	90	Y	Y	Y	Y	-	Y	Y	Y	Y	Y	IK 09	Y
RJ14	360	160	90	Y	Y	Y	Y	-	Y	Y	Y	Y	Y	IK 09	Y
RJ28	180	180	100	Y	Y	Y	Y	-	Y	Y	Y	Y	Y	IK 09	Y
RJ29	280	180	100	Y	Y	Y	Y	-	Y	Y	Y	Y	Y	IK 09	Y
RJ19	230	200	113	Y	Y	Y	Y	-	Y	Y	Y	Y	Y	IK 09	Y
RJ17	280	230	110	Y	Y	Y	Y	-	Y	Y	Y	Y	Y	IK 09	Y
RJ18	330	230	111	Y	Y	Y	Y	-	Y	Y	Y	Y	Y	IK 09	Y
RJ30	200	230	180	Y	Y	Y	Y	-	Y	Y	Y	Y	Y	IK 09	Y
RJ20	330	230	180	Y	Y	Y	Y	-	Y	Y	Y	Y	Y	IK 09	Y



Assembly of Accessories:

DIN Rails with TS15, TS-35 Specifications, Mounting Plates, External Brackets, Internal/External Hinges.



Customized Services:

Mechanical Processing

- Drilling
- Milling
- Tapping
- Profile Milling
- Laser Cutting
- All VMC Operations

Value Added Services

- Screen Printing
- Engraving
- Pad Printing
- Lacquering
- Painting
- Special Powder Coating
- Assembly with Cable Glands

We provide above services on the boxes as per specific requirements.



Applications:



LOCOMOTIVES

In modern cabins of Locomotives where reliability & durability are the key requirements which need higher IP rated Aluminium enclosures. These enclosures are integral parts of the control panels & signal distribution system in locomotives.



PROCESS CONTROL

Application such as automated process controls, machine operation controls in power plants, in energy metering applications & food Processing industry, needs IP protected Aluminium enclosures.

MINING

Mining equipments such as Trucks, Lifters, trollies, earthmovers need higher safety of connections against rough environments.



AUTOMATION

Automation designed for a variety of industrial applications such as lifting equipment and heating and ventilation (HVAC) applications.





CRANE HOISTING

In modern cabins of Cranes of various types where reliability & durability are the key requirements which need higher IP rated Aluminium enclosures. These enclosures are integral parts of the control panels & displays with indicating lamps & push buttons.



LOAD CELLS

Load cells manufacturers & PCB mounting integrators & Panel system integrators use higher IP rated aluminium enclosures which become housing for electronic connections.



HIGH TORQUE BRAKES

Multi Pole - spring applied brakes are used in Passenger Lifts & escalators. Direct drives in modern Lift technology brakes with high braking torques, need IP protected aluminium enclosures.

SOLAR PANELS

Photovoltaic cells installation done by various contractors to preserve aesthetics by placing electrical junction boxes and combiner boxes under PV modules. Solar farms & roof top solar panel installation need higher IP rated Aluminium enclosures.



OIL METERS

Products such as Oil meters, electronic thermometers, intelligent cooling controls use Higher IP rated aluminium enclosures.



DISPLAY KEYPAD

Display with Keypad used in the automation industry for various machines is based on the Aluminium enclosures where IP protection is the key requirement along with durability.



Quality Assurance:

- Raychem RPG has built necessary resources in terms of people and equipment and a above all, an organization, which guarantees efficient use of these resources.
- Various Machines for Measurements and Testing are available to ensure conformance to Quality Specifications.



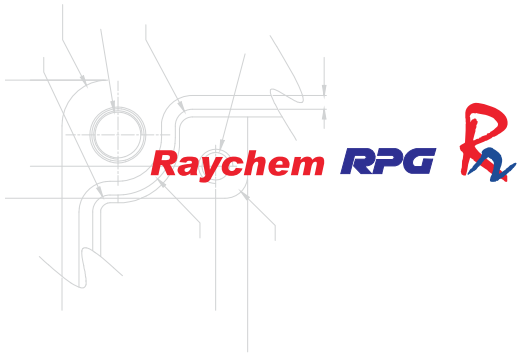
Environment, Health & Safety



Protecting Today to create a better tomorrow together

Raychem RPG is focused on reducing environmental footprints and improving performance. All the manufacturing sites of Raychem RPG are ISO 14001 and OHSAS 18001 Certified.





aluminium Die-cast Enclosure

Raychem RPG (P) Ltd incorporated in 1989 is a 50:50 joint venture company between TE Connectivity, USA (formerly Tyco Electronics) and RPG Enterprises, India.

We are an ISO 9001, ISO 14001 and OHSAS 18001 certified company having six state of art manufacturing facilities across various locations coupled with centralized R&D and Tool Design facility.

We have several ranges of products that cater to different industry vertical like Electrical Energy, Electronics & Telecom, Petroleum/Oil & Gas, Mining, Automation etc.



ISO 9001:2008



ISO 14001:2004



OHSAS 18001:2007

Raychem RPG (P) Limited

International Business Division

1/62, M.G. Road, Off Western Express highway, Sativali,
Vasai (East), THANE - 401208, INDIA

Tel: +91-250-3057627/637/682/562, Direct: +91-9769205861,

Fax: +91-22 6646 67, E-fax: +91-22-6646-6710,

E-mail: apuranik@raychemrpg.com, Web: www.raychemrpg.com

Corporate & Head Office

Ceat Mahal Annexe, 463, Dr. Annie Besant Road, Mumbai 400 030, INDIA

Tel: +91-22-2493-7485 / 6 / 7 Fax: +91-22-2493-8879



(A TE - Connectivity - RPG Enterprises JV)

