

# Transistor Outlines (cont'd)

Fig. T13-2

**SP-92**

**ECG**

**2355**

**2356**

**2357**

**2358**

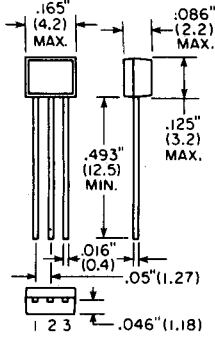
**2360**

**2367**

**2368**

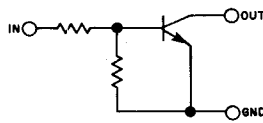
**2369**

**2370**

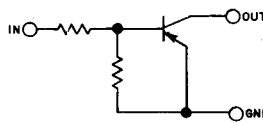


CIRCUITS

NPN



PNP



1. GND
2. OUT
3. IN

Fig. T15

**TO-98**

**ECG**

**172A•**

**199•**

• Alternate Fig. T16

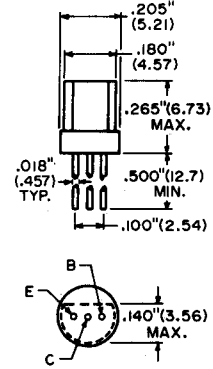


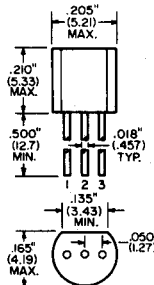
Fig. T16

**TO-92**

ECG	1	2	3
10	B	E	C
11	E	C	B
12	E	C	B
23	B	E	C
46	E	B	C
47	E	B	C
69	B	E	C
85	E	C	B
107	E	C	B
108	E	B	C
123AP	E	B	C
159	E	B	C
172A■	E	C	B

ECG	1	2	3
194	E	B	C
199■	E	C	B
229	B	E	C
232	E	B	C
233	E	B	C
234	E	C	B
287	E	B	C
288	E	B	C
289A	E	C	B
290A	E	C	B
312*	G	S	D
319P	B	E	C
326*	S	D	G

ECG	1	2	3
451	D	S	G
453*	D	S	G
457*	D	S	G
458	D	G	S
467	D	S	G
468	D	S	G
469	D	S	G
489	D	G	S
490	D	G	S
2341	E	C	B
2342	E	C	B
2503	E	C	B



- Alternate Fig. T13-1
- Alternate Fig. T15
- \* D & S Interchangeable

Fig. T17

**TO-237**

**ECG**

**24\***

**25\***

**128P**

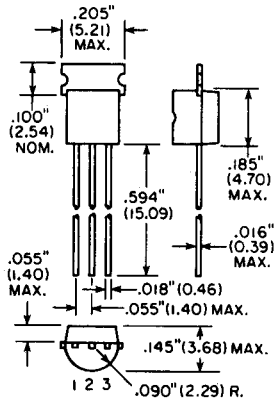
**129P**

**216**

**217**

**227**

**255**



1. EMITTER
2. BASE
3. COLLECTOR

- \*1. EMITTER
2. COLLECTOR
3. BASE

Fig. T18

**TO-92M**

ECG	1	2	3
31	E	C	B
32	E	C	B
48	E	B	C
90	E	C	B
91	E	C	B
382	E	C	B
383	E	C	B
2363	E	C	B
2364	E	C	B

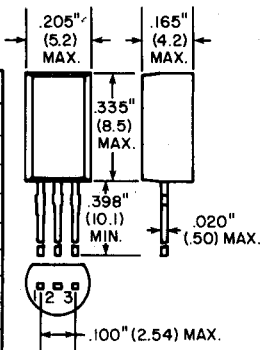
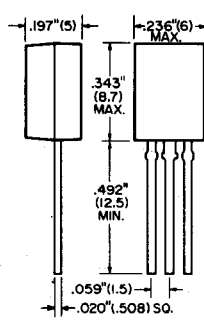


Fig. T19

**SC-51**

**ECG**

**315**



- 1-EMITTER
- 2-COLLECTOR
- 3-BASE

Fig. T20

**T-16**

**ECG**

**293**

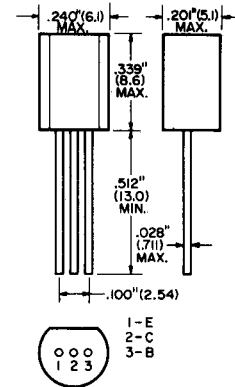
**294**

**297**

**298**

**340**

**399**



- 1-E
- 2-C
- 3-B

Fig. T20-1

**SIP-5**

ECG	1	2	3	4	5
40	B	C	E	C	B
41	B	C	E	C	B
42	B	C	E	C	B
43	B	C	E	C	B
44	E	C	B	C	E
45	E	C	B	C	E

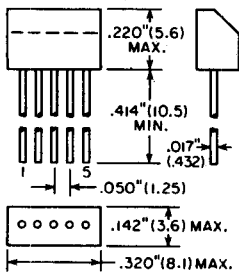


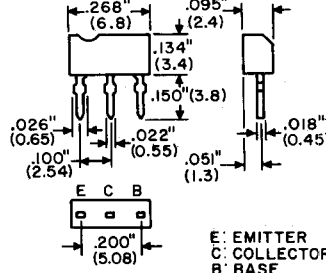
Fig. T20-2

**M-68**

**ECG**

**14**

**15**



- E: EMITTER
- C: COLLECTOR
- B: BASE

Fig. T20-3

**M-71**

**ECG**

**13**

**16**

**17**

**18**

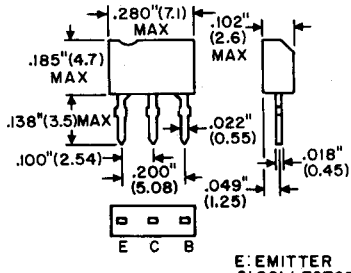
**19**

**20**

**21**

**22**

**2505**



- E: EMITTER
- C: COLLECTOR
- B: BASE