

# IC and Module Outlines (cont'd)

Fig. L114

16 + 2-Pin DIP-ET

- ECG  
1296  
1471  
1486  
1527  
1550  
1583  
1585  
1597  
1600  
1686

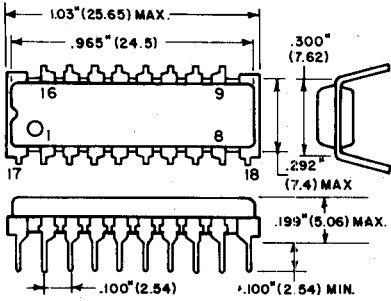


Fig. L115

18-Pin DIP

- ECG  
826 1715  
846 1722  
860 1727  
867 1752  
1296 1755  
1314 1757  
1508 1803  
1509 1811  
1539 1833  
1549 1865  
1558 1889  
1632 2207  
1683 7072  
1689 7084  
1691 7108  
1700 7112  
1702 7115  
1713

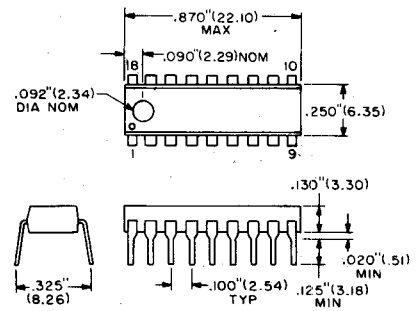


Fig. L115A

18-Pin DIP

- ECG  
1814

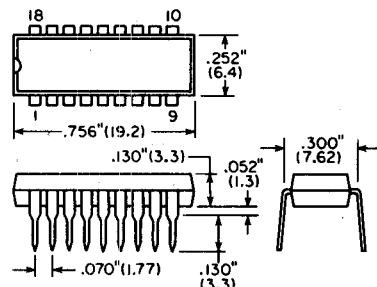


Fig. L116

18-Pin DIP

- ECG  
1265  
1367  
1383

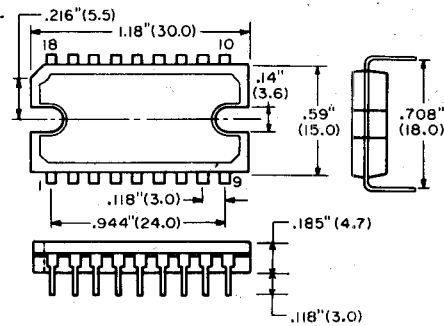


Fig. L117

16 + 2-Pin DIP-Q

- ECG  
730

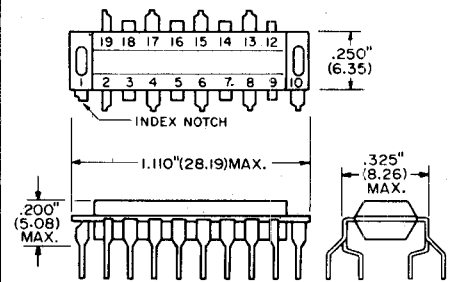


Fig. L118

20-Pin DIP

- ECG

- 880 1475 1595 1812  
1089 1536 1608

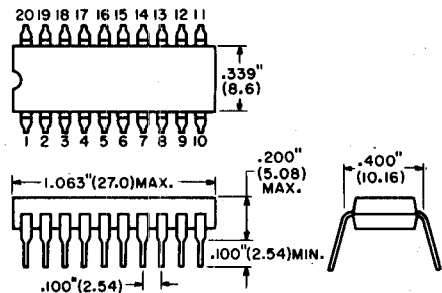


Fig. L118A

20-Pin DIP

- ECG

- 879 1827 1864 7004 7062 7116  
1633 1836 2053 7048 7086

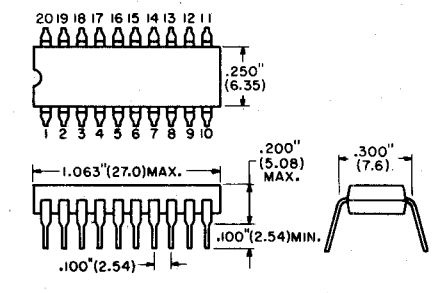


Fig. L119

20-Pin DIP

- ECG

- 1273 1379  
1372

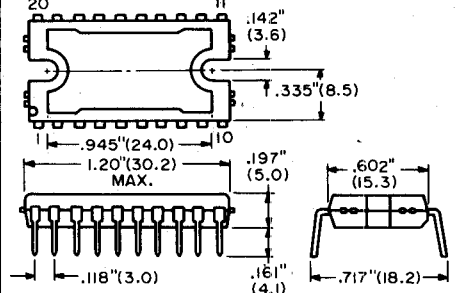


Fig. L119A

20-Pin DIP

- ECG  
1675

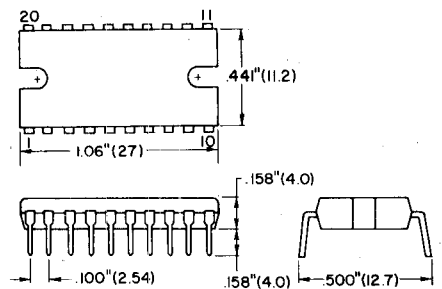


Fig. L120

20-Pin DIP (18 Pins)

- ECG  
1382

