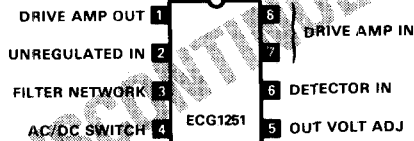


Linear IC and Module Circuits (cont'd)

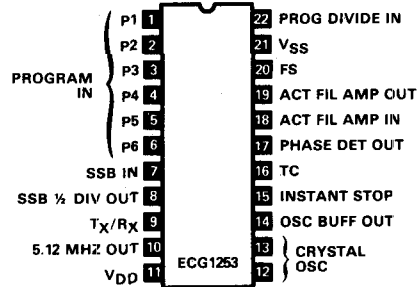
ECG1251
Voltage Regulator

8-Pin DIP-ET See Fig. L137



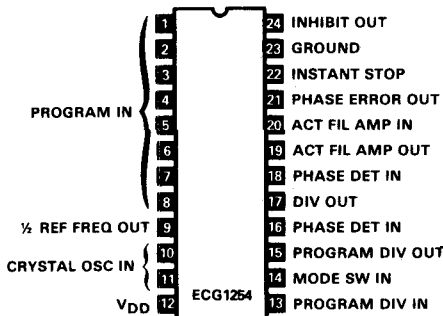
ECG1253
CMOS-PLL Freq Synthesizer, CB

22-Pin DIP See Fig. L121



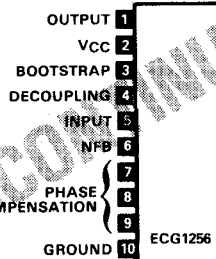
ECG1254
CMOS-PLL Freq Synthesizer, CB

24-Pin DIP See Fig. L122



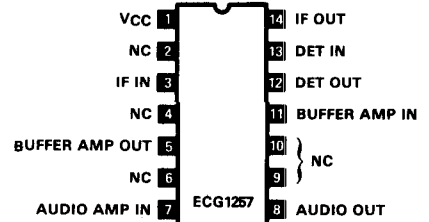
ECG1256
AF PO, 5.8 W

10-Pin SIP-HS See Fig. L84



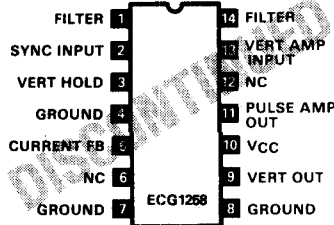
ECG1257
FM IF, Det, AF PO, V_{CC} = 12 V Typ

14-Pin DIP-ET See Fig. L145



ECG1258
Vert Hold, Osc, Output, V_{CC} = 11.5 V Typ

14-Pin DIP-ET See Fig. L148



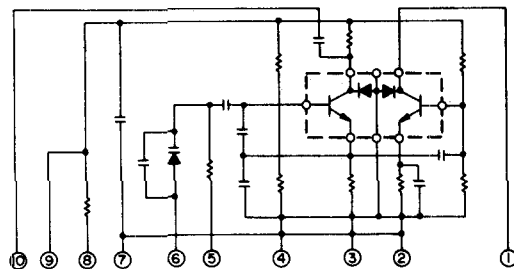
ECG1260
AF PO, 5.5 W, V_{CC} = 13.2 V Typ, R_L = 4 Ω

10-Pin SIP-HS See Fig. L83 Fig. L82



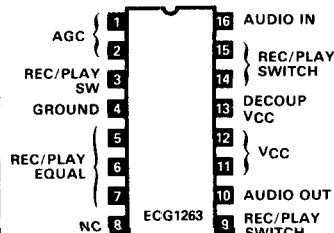
ECG1262
Voltage Controlled Osc, CB

10-Pin SIP See Fig. L43



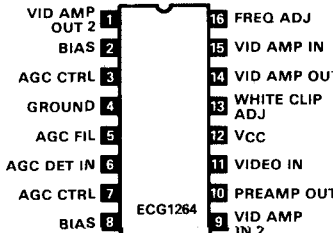
ECG1263
Record/Playback Ckt, VCR, V_{CC} = 12 V Typ

16-Pin DIP See Fig. L112



ECG1264
Luminance Ckt, VCR, V_{CC} = 12 V

16-Pin DIP See Fig. L111



ECG1265
Noise Suppression Ckt, VCR, V_{CC} = 12 V Typ

18-Pin DIP See Fig. L116

