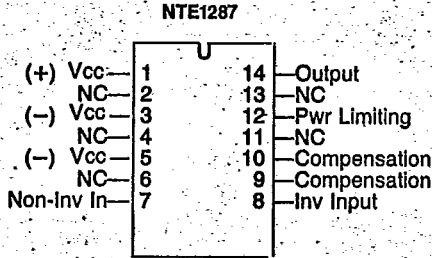
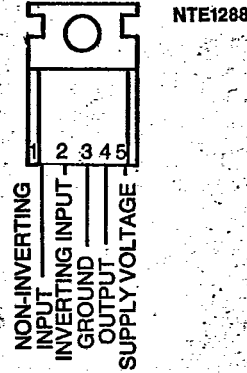


LINEAR INTEGRATED CIRCUITS

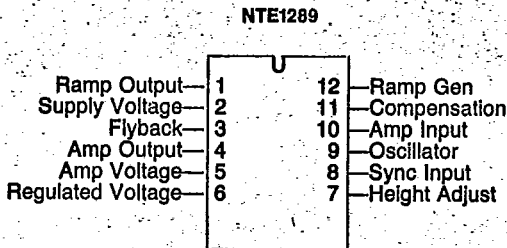
AUDIO PWR AMP, 20W, INCLUDES THERMAL SHUTDOWN, $V_{cc} = \pm 22V$
14-LEAD DIP, SEE DIAG 247



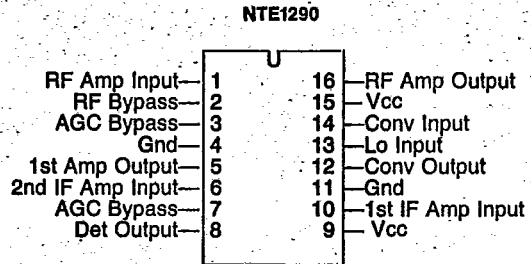
AUDIO PWR AMP, 10W, FOR CAR RADIO, $V_{cc} = 18V$ MAX
5-LEAD TO-220, SEE DIAG 205



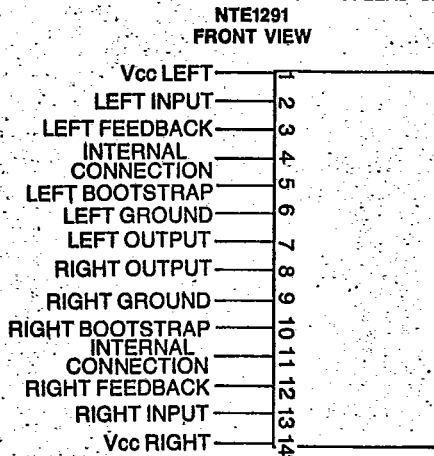
TV VERT DEFLECTION SYSTEM, $V_{cc} = 35V$ 12-LEAD DIP, SEE DIAG 261



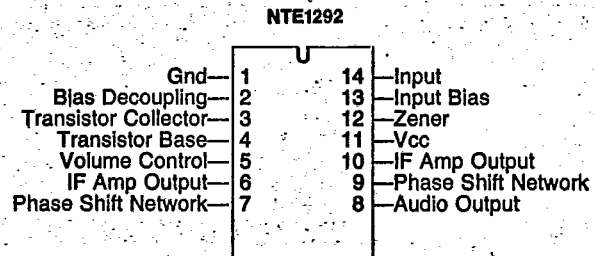
AM TUNER FOR CAR RADIO, $V_{cc} = 16V$ 16-LEAD DIP, SEE DIAG 248



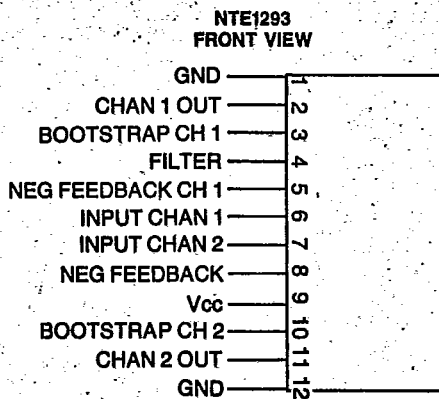
DUAL AUDIO PWR AMP, 5.5W PER CHANNEL, $V_{cc} = 18V$
14-LEAD SIP, SEE DIAG 288



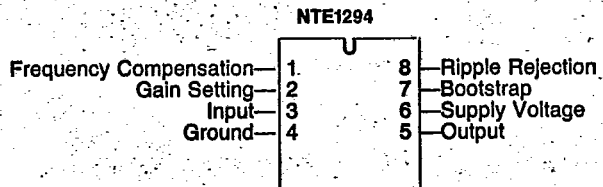
IF AMP W/DETECTOR, $V_{cc} = 18V$ 14-LEAD DIP, SEE DIAG 247



DUAL AUDIO PWR AMP, 5.8W PER CHANNEL, $V_{cc} = 25V$
12-LEAD SIP, SEE DIAG 289



AUDIO PWR AMP, 2W, $V_{cc} = 16V$ 8-LEAD DIP, SEE DIAG 246



TV SIG PROCESSOR 18-LEAD DIP, SEE DIAG 287

