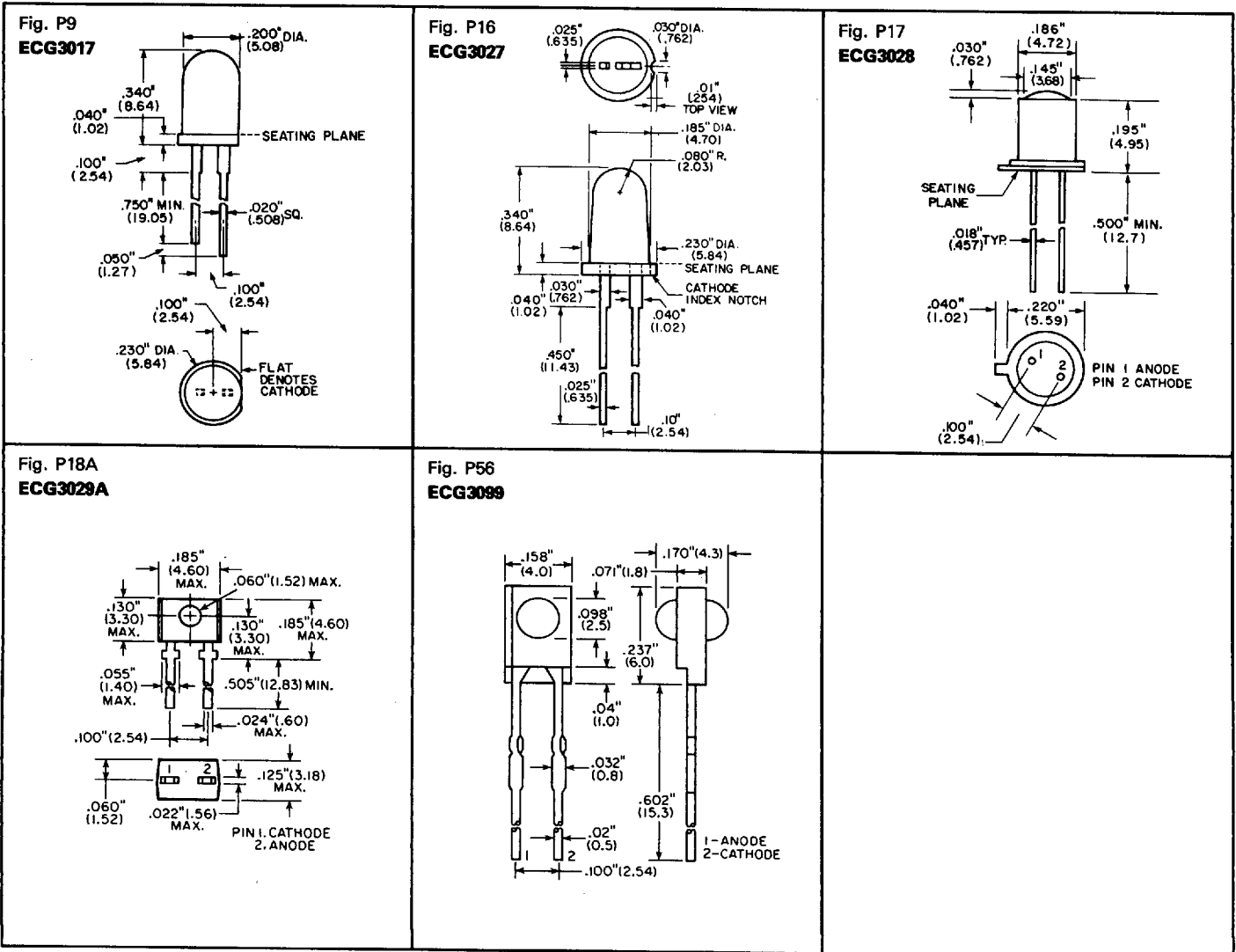


# Infrared Emitting Diodes

| ECG Type         | Description   | Min Power Output $P_o$ | Max Forward Voltage $V_f$ (V) | Reverse Voltage $V_R$ (V) | DC Forward Current $I_f$ (mA) | Power Diss. P/Case (m/W) | Peak Emission Wavelength $\lambda_p$ (nm) | Response Time (ns) | Beam Angle $\theta_{HI}$ (Deg) | Fig. No. |
|------------------|---|------------------------|-------------------------------|---------------------------|-------------------------------|--------------------------|---|--------------------|--------------------------------|----------|
| <b>ECG3017</b>   | Infrared Emitting Diode for TV Remote Control, 15 mW @ $I_f = 100$ mA | 15 mW                  | 1.7                           | 5                         | 150                           | 210                      | 950                                       | 400                | 60                             | P9       |
| <b>ECG3027</b>   | PN Gallium Arsenide   | 1 mW                   | 1.5                           | 5                         | 100                           | 150                      | 900                                       | 100                | 15                             | P16      |
| <b>ECG3028</b>   | PN Gallium Arsenide   | 200 $\mu$ W            | 1.5                           | 3                         | 150                           | 200                      | 900                                       | 50                 | 15                             | P17      |
| <b>ECG3029A*</b> | PN Gallium Arsenide   | 2 mW                   | 1.8                           | 6                         | 50                            | 150                      | 900                                       | 1000               | 30                             | P18A     |
| <b>ECG3099</b>   | Bi-Directional IR LED   | 1.8 mW                 | 1.5                           | 3                         | 50                            | 75                       | 940                                       | ---                | 15                             | P56      |

\* 2 Per Pkg.

## Outlines



K

6653928 0009255 654