

Discrete LED Indicators

| ECG Type | Description/Application | Viewed Color | Forward Voltage V _F (V) | Reverse Voltage V _R (V) | Max DC Forward Current I _F (mA) | Maximum Power Diss. P _D (mW) | Typical Viewing Angle Degrees | Typical Luminous Intensity MCD | Qty Per Pkg | Fig. No. |
|----------|--|-------------------|------------------------------------|------------------------------------|--|---|-------------------------------|--------------------------------|-------------|----------|
| ECG3000 | Indicator Lights, Diagnostic and Panel Displays, Printed Circuit Board Indicators, Miniature Low Profile Package | Clear Red | 1.65 | 5.0 | 40 | 80 | 80 | 1.4 | 4 | P1 |
| ECG3001 | | Flooded Red | 1.65 | 5.0 | 40 | 80 | 80 | 1.0 | 4 | P1 |
| ECG3002 | | Clear Yellow | 2.10 | 5.0 | 35 | 105 | 80 | 1.0 | 2 | P1 |
| ECG3003 | | Clear Green | 2.20 | 5.0 | 35 | 105 | 80 | 1.0 | 2 | P1 |
| ECG3004 | Diagnostic or Indicator Lights in Low-Power/Low Current Environments, MOS Compatible | Red | 1.60 | 5.0 | 35 | 105 | 25 | 2.0 | 2 | P2 |
| ECG3007 | General Purpose Indicators, Developmental Projects, Breadboards | Red | 1.68 | 5.0 | 50 | 100 | 70 | 2.5 | 4 | P3 |
| ECG3008 | | Bright Red | 2.00 | 5.0 | 35 | 105 | 90 | 5.0 | 2 | P3 |
| ECG3009 | | Orange | 2.00 | 5.0 | 35 | 105 | 90 | 5.0 | 2 | P3 |
| ECG3010 | | Green | 2.20 | 5.0 | 35 | 105 | 90 | 1.0 | 2 | P3 |
| ECG3011 | | Yellow | 2.10 | 5.0 | 35 | 105 | 90 | 3.0 | 2 | P3 |
| ECG3012A | Panel Circuit Indicators, Low Drive Power, High Intensity Visible Emission | Diffused Red | 2.20 | 4.0 | 25 | 70 | 30 | 3.5 | 4 | P4A |
| ECG3013A | | Clear Red Jewel | 2.80 | 4.0 | 25 | 70 | 30 | 3.5 | 4 | P5A |
| ECG3014A | | Green | 2.8 | 4.0 | 25 | 70 | 30 | 10 | 2 | P4A |
| ECG3015A | | Clear Green Jewel | 2.10 | 4.0 | 25 | 70 | 30 | 12 | 2 | P5A |
| ECG3016A | Two Color Panel Circuit Indicator | Red or Green | 2.15 | 4.0 | 25 | 68 | 60 | .8 | 2 | P6A |
| ECG3018 | Instruments, Printed Circuit Board Indicators, Boardmounted Panel Display | Soft Red | 1.65 | 5.0 | 100 | 180 | 90 | 1.6 | 2* | P7 |
| ECG3019 | | Soft Red | 1.65 | 5.0 | 100 | 180 | 60 | 3.0 | 2* | P7 |
| ECG3020 | Computers, General Purpose Indicators, Instruments, Test Systems, Mini- and Micro-Processors, Process Controlled Industrial Systems, Sorting Machines, Assembly Equipment, Vending Machines, Telephone Equipment, Backlight Panels. High Intensity Indicators in Four Colors | Flooded Red | 1.70 | 5.0 | 100 | 180 | 80 | 1.6 | 2* | P8 |
| ECG3021 | | Yellow | 2.10 | 5.0 | 35 | 105 | 65 | 6.0 | 2* | P8 |
| ECG3022 | | Bright Red | 2.00 | 5.0 | 35 | 105 | 65 | 6.0 | 2* | P8 |
| ECG3023 | | Orange | 2.00 | 5.0 | 35 | 105 | 65 | 6.0 | 2* | P8 |
| ECG3024 | | Diffused Green | 2.20 | 5.0 | 35 | 105 | 65 | 1.5 | 2* | P8 |
| ECG3025 | Instruments, Printed Circuit Board Indicators, Boardmounted Panel Display | Red | 1.80 | 5.0 | 100 | 180 | 40 | 3.0 | 2* | P9 |
| ECG3026 | Polarity Indication Tri-State Indicator, Flow Direction Display, Instruments, Tester Displays, Educational Aids | Red or Green | 1.65 - R 2.20 - G | -- | 70 - R 35 - G | 200 | 50 | .5 - G 1.5 - R | 1* | P10 |
| ECG3030 | Flashing Red LED with Integral IC. Applications Include Status Indicators and Warning Lights, Pulse Rate = 3 Hz Typ at 5 VDC | Flashing Red | Max V Applied 5.25 | .4 | 20 | -- | 40 | 1.2 | 1 | P9A |
| ECG3130 | Flashing Yellow LED with Integral IC. For Status Indicators and Warning Lights, Pulse Rate = 2.5 Hz Typ at 5 V | Flashing Yellow | Max V Applied 5.25 | .4 | 20 | -- | 40 | 3 | 1 | P9A |
| ECG3131 | Flashing Green LED with Integral IC. For Status Indicators and Warning Lights, Pulse Rate = 2.5 Hz Typ at 5 V | Flashing Green | Max V Applied 5.25 | .4 | 20 | -- | 40 | 2 | 1 | P9A |

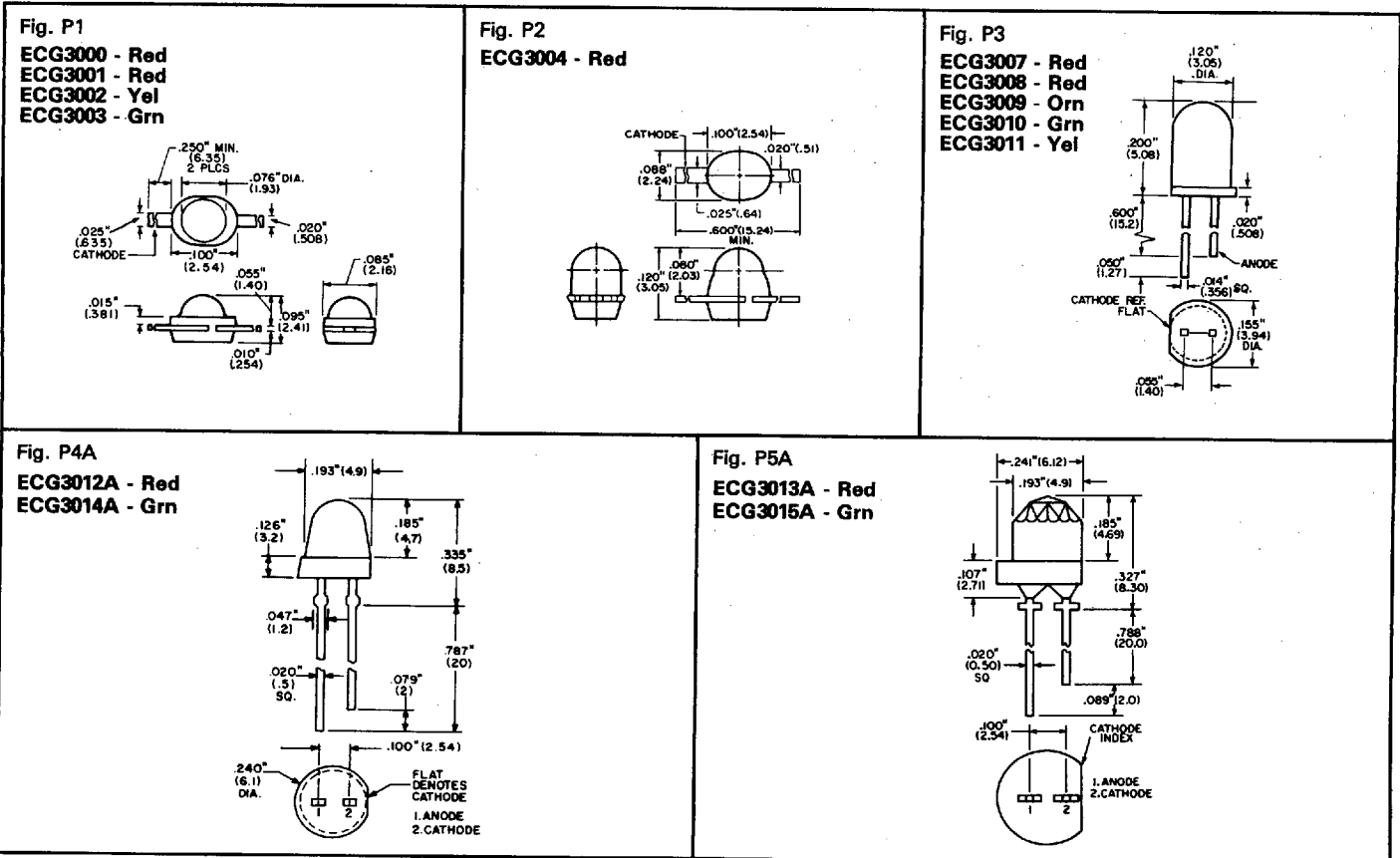
* Package includes 2 piece panel mounting grommets consisting of 1 lamp holder and 1 collar for each device.

6653928 0009251 T09

Discrete LED Indicators (cont'd)

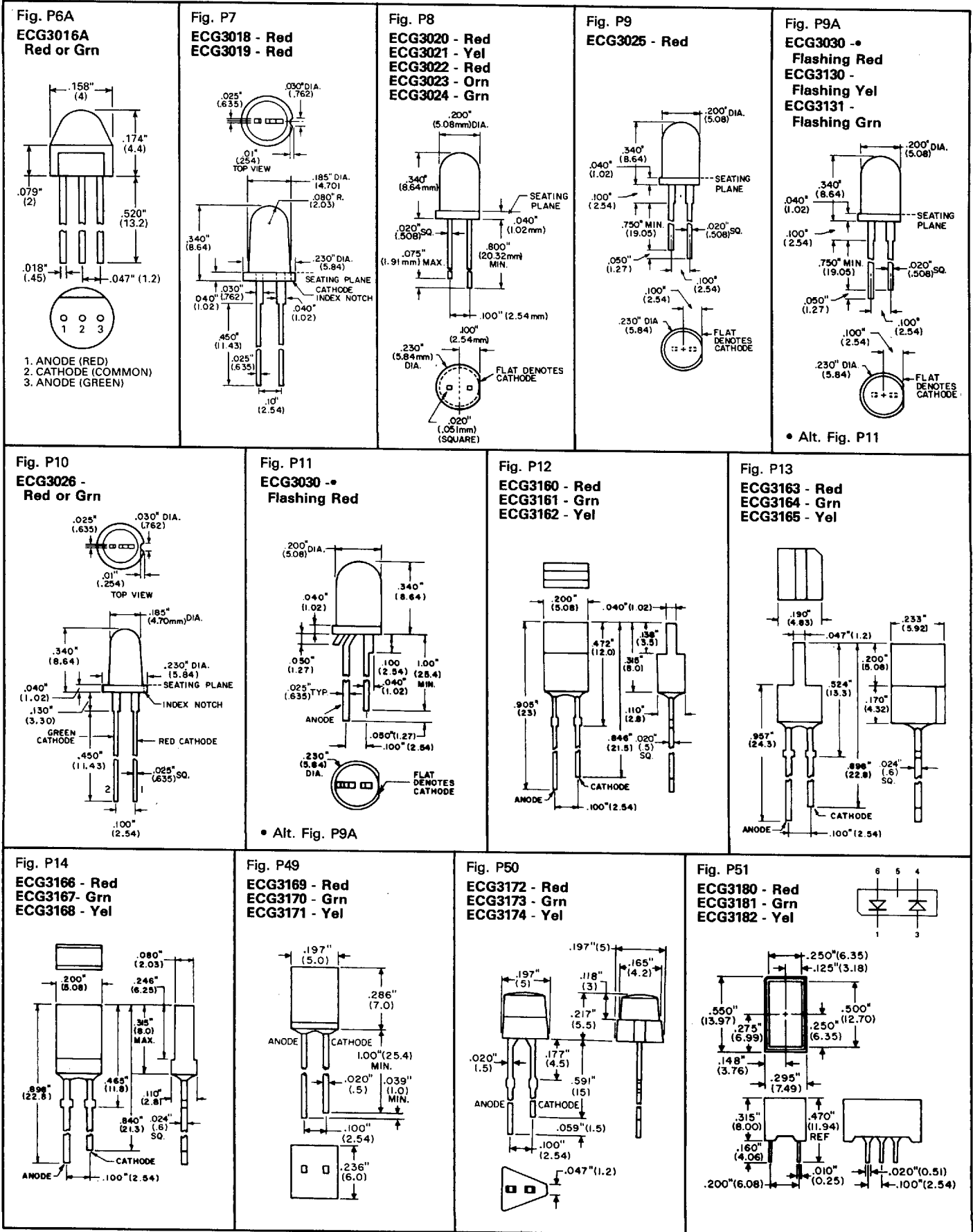
| ECG Type | Description/Application | Viewed Color | Forward Voltage VF (V) | Reverse Voltage VR (V) | Max DC Forward Current IF (mA) | Maximum Power Diss. Pd (mW) | Typical Viewing Angle Degrees | Typical Luminous Intensity MCD | Qty Per Pkg | Fig. No. |
|----------|---|-----------------|------------------------|------------------------|--------------------------------|-----------------------------|-------------------------------|--------------------------------|-------------|----------|
| ECG3160 | Rectangular LEDs. Applications Include Bar Graph Displays, Level Meters, Panel Displays, Instrumentation and General Purpose Indicators | Red | 1.90 | 3.0 | 30 | 70 | 50 | .4 | 5 | P12 |
| ECG3161 | | Green | 2.10 | 3.0 | 30 | 70 | 50 | .7 | 5 | P12 |
| ECG3162 | | Yellow | 2.10 | 3.0 | 30 | 70 | 50 | 2.0 | 5 | P12 |
| ECG3163 | | Red | 1.90 | 3.0 | 30 | 70 | 50 | .4 | 5 | P13 |
| ECG3164 | | Green | 2.10 | 3.0 | 30 | 70 | 50 | .7 | 5 | P13 |
| ECG3165 | | Yellow | 2.10 | 3.0 | 30 | 70 | 50 | 1.5 | 5 | P13 |
| ECG3166 | | Red | 1.90 | 3.0 | 30 | 70 | 50 | .5 | 5 | P14 |
| ECG3167 | | Green | 2.10 | 3.0 | 30 | 70 | 50 | .7 | 5 | P14 |
| ECG3168 | | Yellow | 2.10 | 3.0 | 30 | 70 | 50 | 2.0 | 5 | P14 |
| ECG3169 | Square LED, Used as Level Indicator, Panel Display and General Purpose | Diffused Red | 2.8 | 5.0 | 20 | -- | -- | 1.5 | 5 | P49 |
| ECG3170 | | Diffused Green | 2.8 | 5.0 | 20 | -- | -- | 2.0 | 5 | P49 |
| ECG3171 | | Diffused Yellow | 2.8 | 5.0 | 20 | -- | -- | 2.0 | 5 | P49 |
| ECG3172 | Triangular LED, Used as Location Indicator and Line Finder | Diffused Red | 2.8 | 4.0 | 25 | 70 | 50 | .4 | 5 | P50 |
| ECG3173 | | Diffused Green | 2.8 | 4.0 | 30 | 90 | 50 | 1.0 | 5 | P50 |
| ECG3174 | | Diffused Yellow | 2.8 | 4.0 | 30 | 90 | 50 | 1.0 | 5 | P50 |
| ECG3180 | P. C. Mount. LED, Used as Panel Indicators, Backlight Legends, Light Arrays. Mounting Grommet Supplied With Each LED | Red | 2.5 | 5.0 | 35 | 200 | 120 | 4.5 | 2 | P51 |
| ECG3181 | | Green | 3 | 5.0 | 30 | 200 | 120 | 4.5 | 2 | P51 |
| ECG3182 | | Yellow | 2.5 | 5.0 | 25 | 200 | 120 | 4.5 | 2 | P51 |

Discrete LED Indicator Outlines



6653928 0009252 945

Discrete LED Indicator Outlines (cont'd)



6653928 0009253 881