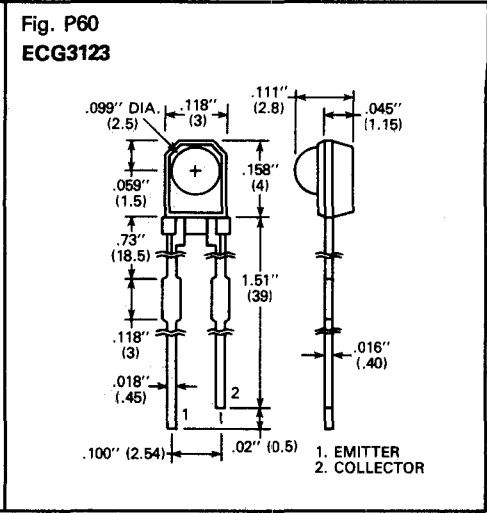
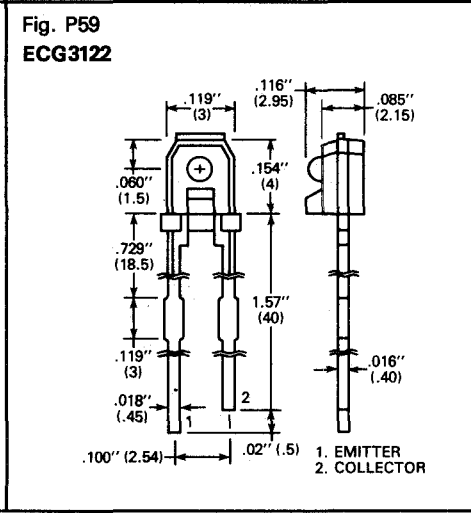
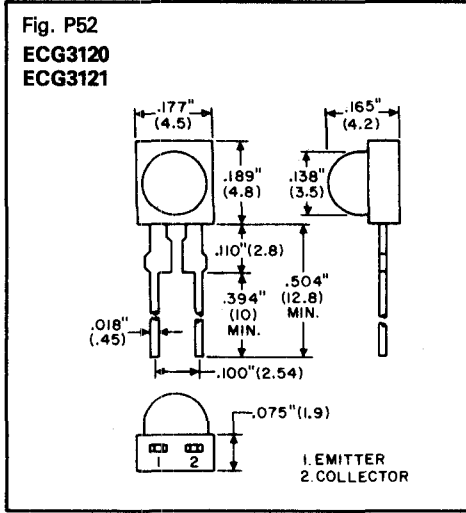


# Phototransistor Detector Outlines (cont'd)

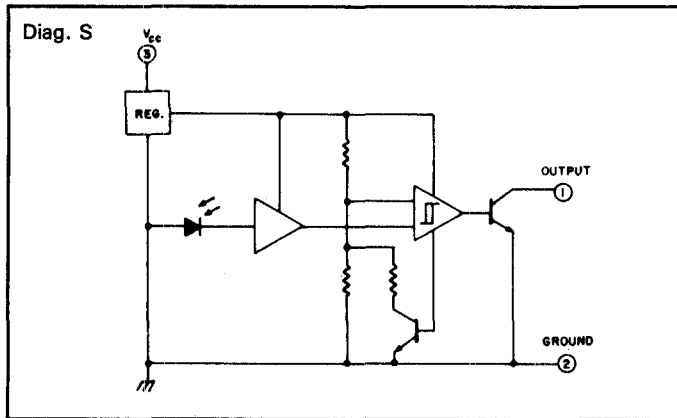


## Opto-Electronic Switch – Day/Night Sensing

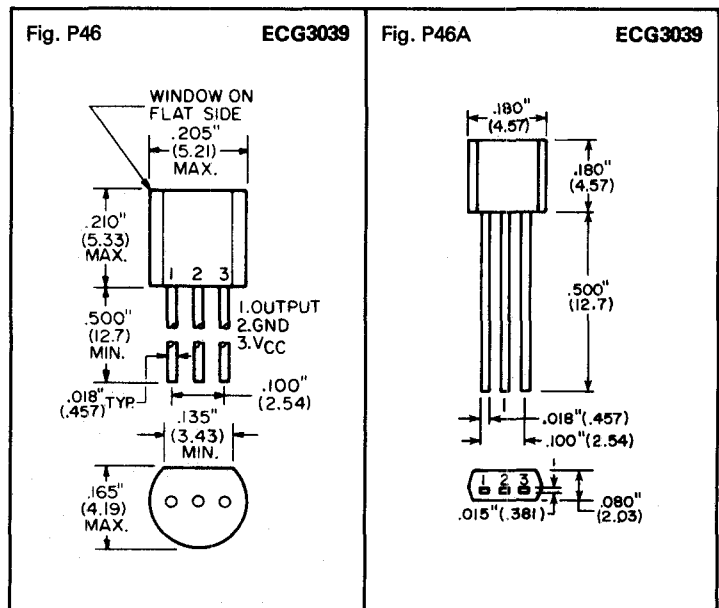
ECG Type	Description	Max Ratings				Typical Ratings		Ckt Diagram	Fig.* No.
		Supply Voltage V <sub>CC</sub> (V)	Output Voltage V <sub>OUT</sub> (V)	Output Current I <sub>OUT</sub> (mA)	Power Diss. P <sub>D</sub> (mW)	Light Threshold ON E <sub>ON</sub> (Lumens/Ft <sup>2</sup> )	Light Threshold OFF E <sub>OFF</sub> (Lumens/Ft <sup>2</sup> )		
ECG3039	Light/Dark Electronic Switch	15	15	50	750	5.0	5.9	S	P46 P46A

\* May be shipped in either case style.

### Circuit



### Outlines



### Typical Application

