

**Kleinkühlkörper  
für TO 5, TO 18 o. ä.**

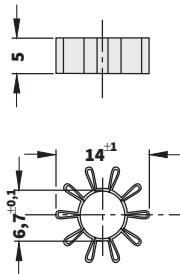
**Heatsinks  
for TO 5, TO 18 or similar**

**Dissipateurs pour  
TO 5, TO 18 ou similaires**

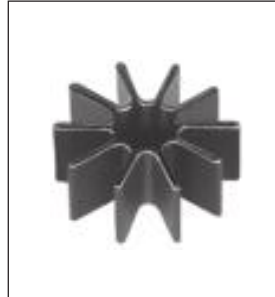
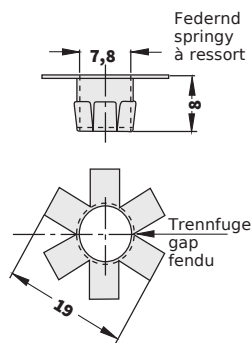
C



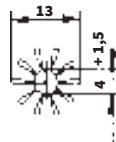
**KK 504**  
TO 5  
65 K/W



**KK 562 GS**  
TO 5  
60 K/W



**KK 184**  
TO 18  
65 K/W



**Material**Federbronze CuSn6  
KK562GS CuZn15  
Dicke: 0,25 mm  
KK562GS 0,3 mm  
Oberfläche: geschwärzt

**Material**Special bronze CuSn6  
KK562GS CuZn15  
Thickness: 0.25 mm  
KK562GS 0.3 mm  
Surface: blackened

**Matière**Bronze spécial CuSn  
KK562GS CuZn15  
Épaisseur: 0,25 mm  
KK562GS 0,3 mm  
Finition: noirci

**Kleinkühlkörper  
für TO 5 u. ä.**

**Heatsinks  
for TO 5 and similar**

**Dissipateurs pour  
TO 5 et similaires**

C



**KK 55**  
62 K/W



**KK 510**  
38 K/W



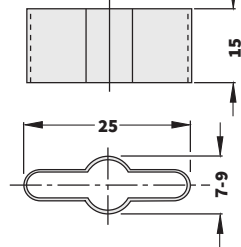
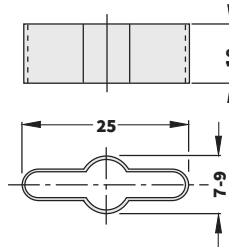
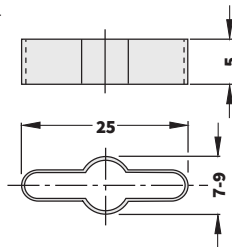
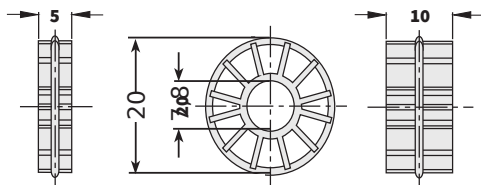
**KF 5/5**  
57 K/W



**KF 5/10**  
46 K/W



**KF 5/15**  
40 K/W



**Material** Aluminium, schwarz eloxiert  
**Material** Aluminium, black anodised  
**Matière** Aluminium, anodisée noire

**Material:** Messing  
**Oberfläche:** geschwärzt

**Material** Brass  
**Surface:** blackened

**Matière** Laiton  
**Finition** miroir



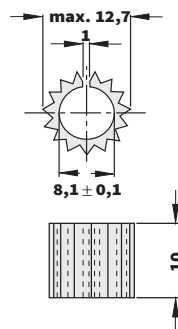
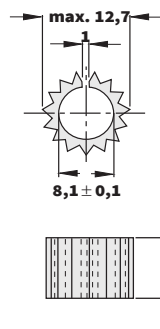
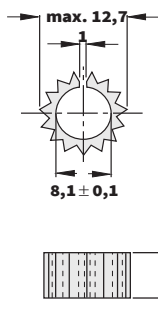
**SKK 56**  
63 K/W



**SKK 58**  
55 K/W



**SKK 510**  
44 K/W



**Material** Aluminium  
**Oberfläche:** geätzt

**Material** Aluminium  
**Surface:** etched

**Matière** Aluminium  
**Finition:** décapé

**Andere Farben auf Anfrage**

**Other colours on request**

**Autres couleurs sur demande**

C 17

**Aufsteckkühlkörper  
Präzisionsfassungen für TO 5  
Montagescheiben**

**Attachable heatsinks  
High precision sockets for TO 5  
Mounting pads**

**Dissipateurs enfichables  
Supports de précision pour TO 5  
Entretoises**

→ C 11 - 16  
→ F 27 - 31  
→ E 23 - 25

**Kühlkörper für Transistoren im Plastikgehäuse** **Heatsinks for transistors in plastic housing** **Dissipateurs pour transistors en boîtier plastique**